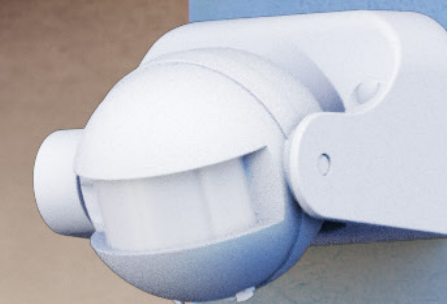


# 02

# PRODUCT NEWS

- + HDMI™ Audio Extractor
- + HDMI™ Switch Box 2 to 1
- + USB-C™ to USB-C™ Textile Cable with Metal Plugs
- + Keystone Module RJ45 CAT 6A, STP, Slim
- + Keystone Module RJ45 CAT 6A, Slim & Short
- + Keystone Module HDMI™ 8K @ 60 Hz
- + Outdoor Surface Mounted Box IP44, 2x Keystone Ports
- + Motion Detectors, Various Designs
- + Wireless LED Table Lamp, Size S, 25 cm



**wentronic**



# PRODUCT NEWS

# OVERVIEW

**HDMI™  
Audio Extractor**



**HDMI™  
Switch Box 2 to 1**



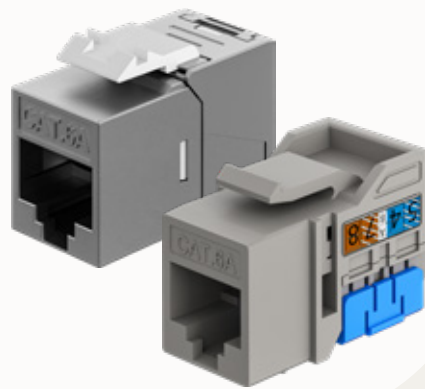
**USB-C™ to USB-C™  
Textile Cable  
with Metal Plugs**



**Keystone-Modul RJ45  
CAT 6A, STP,  
Slim**



**Keystone Module RJ45  
CAT 6A,  
Slim & Short**



**Keystone Module  
HDMI™  
8K @ 60 Hz**



**Outdoor Surface  
Mounted Box IP44,  
2x Keystone Ports**



**Motion Detectors,  
Various Designs**



**Wireless  
LED Table Lamp,  
Size S, 25 cm**





# HDMI™ Audio Extractor

4K @ 30 Hz



4K @ 30 Hz      Plug & Play

HDMI™ converter for top digital and analogue sound quality, perfect for transmission to devices without their own HDMI™ connection, e.g. headphones, hi-fi system, soundbar or TV

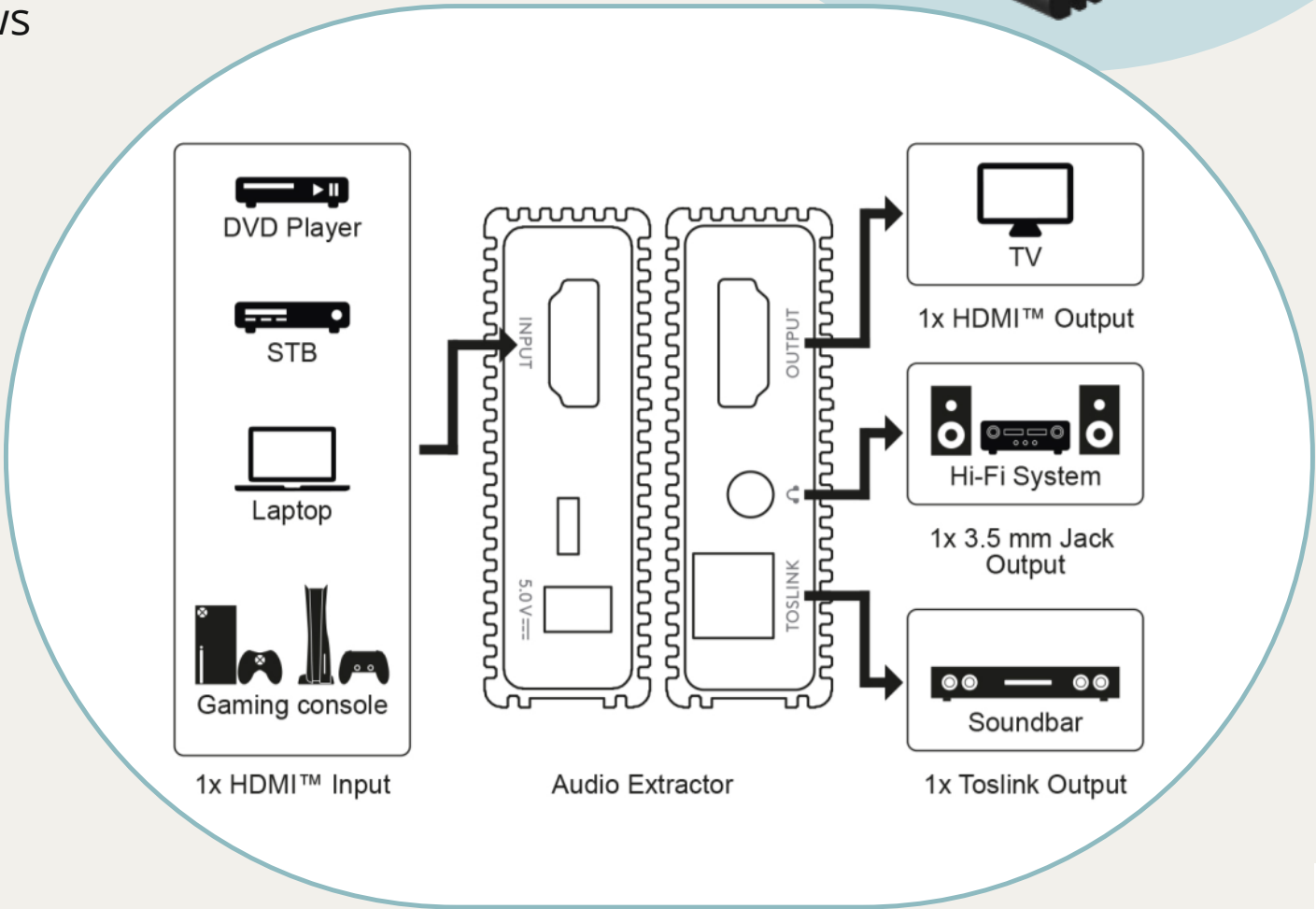
The HDMI™ sound splitter converts the incoming HDMI™ digital audio signal into an analogue stereo signal for connected end devices

Via the HDMI™ output, the HDMI™ audio splitter achieves a video resolution of max. 4K2K @ 30 Hz and also supports 3D

Plug & Play facilitates connecting the S/PDIF splitter without installing additional drivers

The sturdy aluminium housing dissipates heat and allows for easy cable management with the rear connection arrangement

With gold-plated connections for corrosion protection and high-quality signal transmission



Packaging: Bulk

Availability	Item no.	EAN	RRP	Pcs./master carton	Pcs./PU	Length	Width	Height	Weight
● exp. from week 07	79138	4040849791383	24.99 €	50	1	12.50 cm	11.60 cm	5.50 cm	0.208 kg



# HDMI™ Switch 2 to 1

8K @ 60 Hz



8K @ 60 Hz      Plug & Play

The HDMI™ switch transmits signals from 2x input devices such as game consoles, laptops or Blu-ray players to 1x output device such as a TV, monitor or projector

High resolution: The HDMI™ switcher 2 in 1 out supports resolutions up to 8K @ 60 Hz, 3D content and HDCP

2 inputs, 1 display: At the touch of a button, either input 1 or input 2 is mirrored on the output display

The convenient switch on the HDMI™ extender eliminates the need to reconnect cables and protects the connections

Less cable clutter between Xbox, PlayStation and TV: Instead of connecting two long cables to the display, one long cable between the switch box and the TV is sufficient

The HDMI™ switchbox 2x1 is powered via the integrated USB-C™ connection (cable not included)

Note: The HDMI™ switcher does not work as a splitter!



				Packaging: Bulk					
Availability	Item no.	EAN	RRP	Pcs./master carton	Pcs./PU	Length	Width	Height	Weight
● exp. from week 07	77791	4040849777912	24.99 €	100	1	9.00 cm	8.00 cm	5.00 cm	0.090 kg



# USB-C™ to USB-C™ Textile Cable with Metal Plugs

60 W, 3 A, elegant elegant and extra-robust connection cable for devices with USB-C™ Connector



60 W

480 Mbit/s

0.15 m

The Goobay USB-C™ charging cable for super-fast charging with 60 W

At 0.15 m long, the USB-C™ charging cable is ideal for easily connecting your smartphone to a power bank or USB car charger socket

Also perfect for data: The USB-C™ cable provides Hi-Speed data transfer rates of up to 480 Mbit/s (USB 2.0)

Thanks to the reinforced metal plug and textile coating, the USB-C™ to USB-C™ cable is extremely hard-wearing and durable

The braided textile coating of the Goobay Type-C charging cable offers a pleasant feel and is gentle on sensitive surfaces

The USB Type-C cable is universally compatible with smart-phones, Apple iPhones, PCs, laptops, tablets, etc., and supports charging on Apple MacBooks



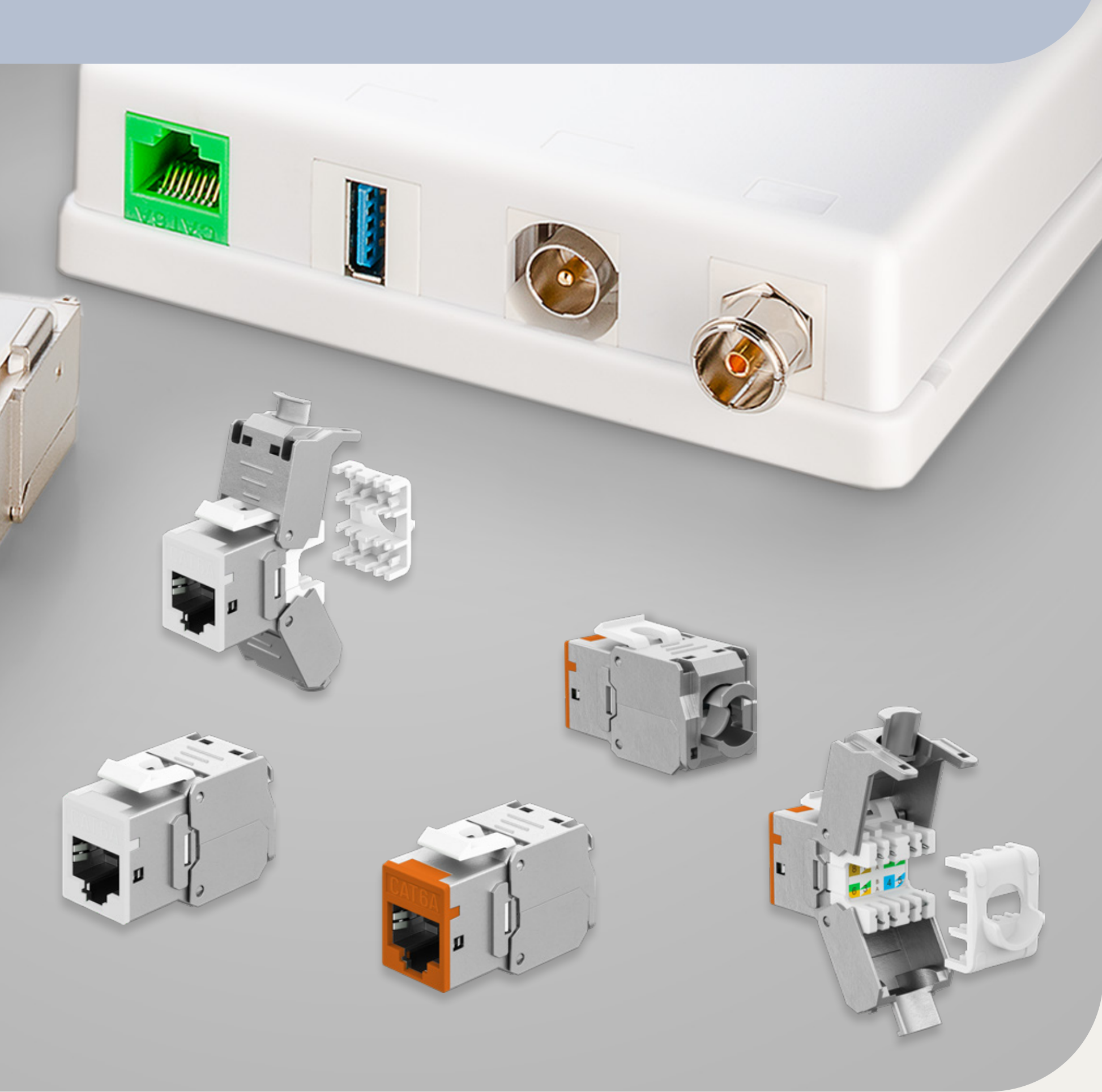
					Packaging: Retail Box					
Availability	Cable length	Item no.	EAN	RRP	Pcs./master carton	Pcs./PU	Length	Width	Height	Weight
● exp. from week 07	0.15 m	79559	4040849795596	3.99 €	240	1	14.50 cm	7.50 cm	2.50 cm	0.024 kg





# Keystone Module RJ45 CAT 6A, STP, Slim

16.6 mm wide, crocodile type, for tool-free IDC mounting



- CAT 6A
- RJ45
- STP
- Slim

CAT 6A Keystone module in a slim design and 16.6 mm wide for space-saving installation in patch panels – no longer lack of space when inserting several modules next to each other

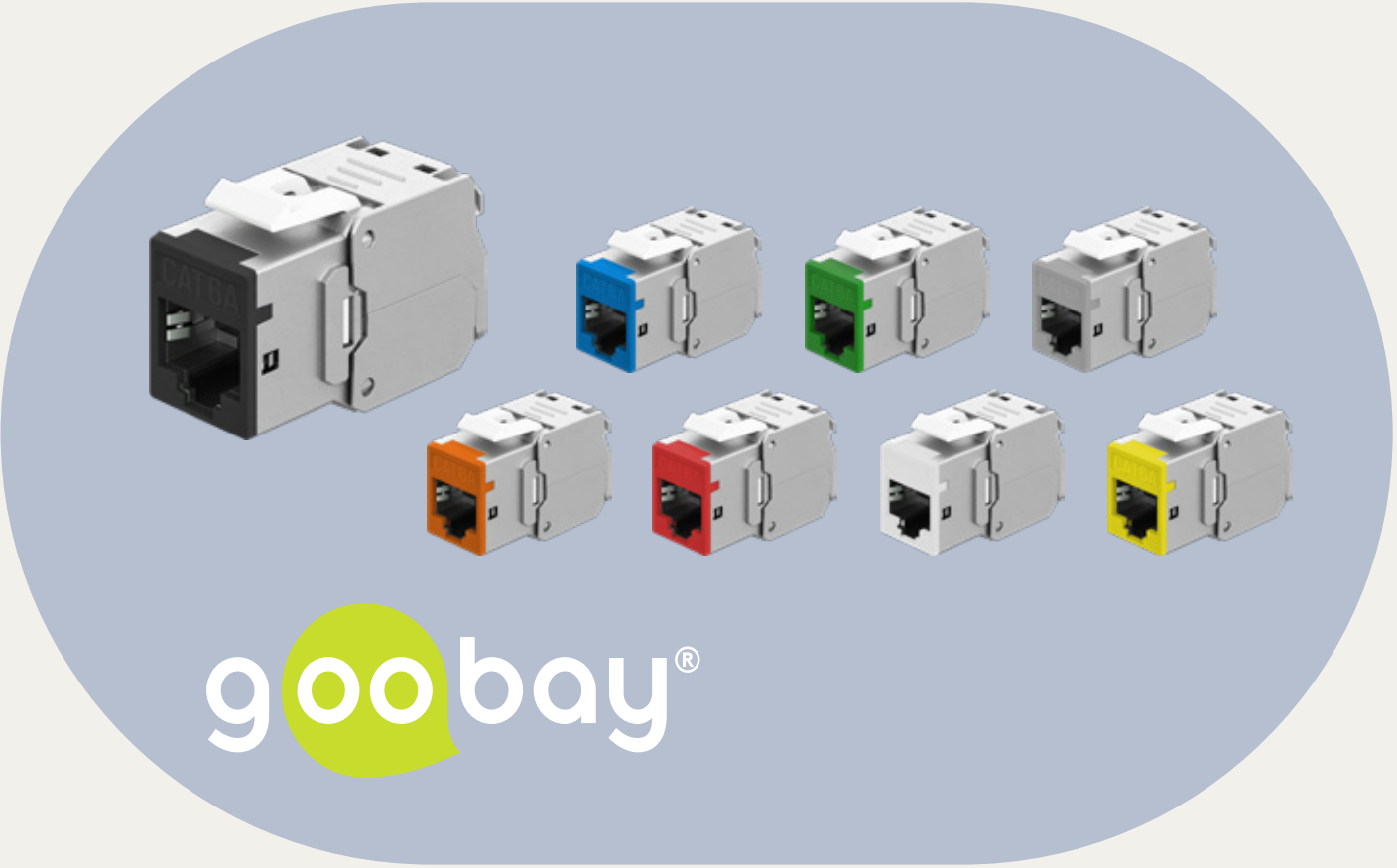
The colour of the front helps with identifying individual connections in structured cabling

STP-shielded RJ45 coupler with robust die-cast zinc housing for the flawless transmission of network signals

The module is suitable for Power over Ethernet (PoE+) in accordance with IEEE 802.3at and supports 10 Gigabit Ethernet applications at 500 MHz

Perfect for cable assembly in patch panels or control cabinets and in structured building cabling

The RJ45 socket for field assembly is suitable for solid and stranded wire



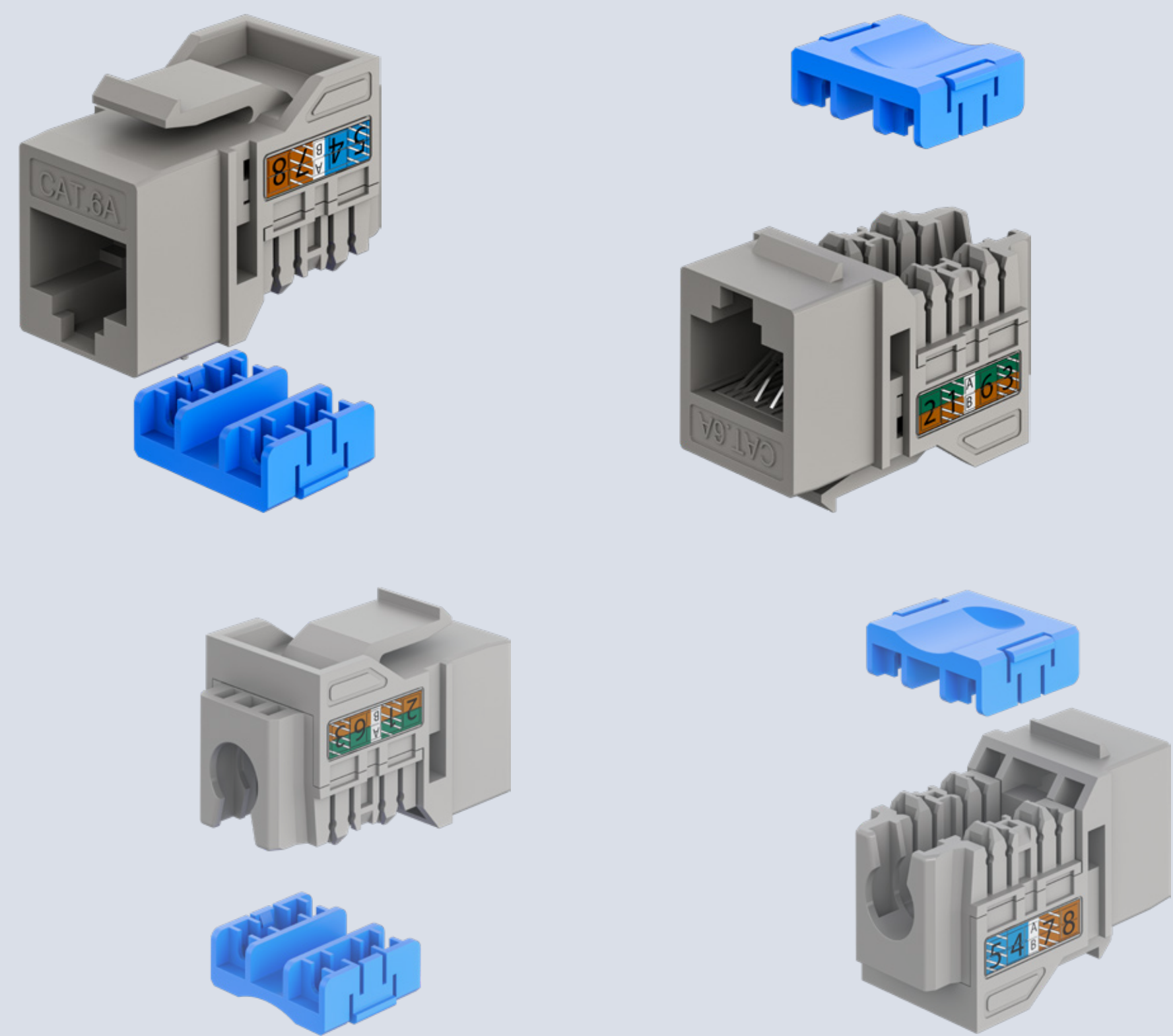
The rear RJ45 connection is TIA 568A/B colour-coded



					Packaging: Bulk					
Availability	Colour	Item no.	EAN	RRP	Pcs./master carton	Pcs./PU	Length	Width	Height	Weight
● exp. from week 13	● black	77943	4040849779435	6.99 €	500	1	10.00 cm	6.00 cm	2.30 cm	0.023 kg
● exp. from week 13	● blu	77944	4040849779442	6.99 €	500	1	10.00 cm	6.00 cm	2.30 cm	0.023 kg
● exp. from week 13	● green	77945	4040849779459	6.99 €	500	1	10.00 cm	6.00 cm	2.30 cm	0.023 kg
● exp. from week 13	● light grey	77946	4040849779466	6.99 €	500	1	10.00 cm	6.00 cm	2.30 cm	0.023 kg
● exp. from week 13	● orange	77947	4040849779473	6.99 €	500	1	10.00 cm	6.00 cm	2.30 cm	0.023 kg
● exp. from week 13	● red	77948	4040849779480	6.99 €	500	1	10.00 cm	6.00 cm	2.30 cm	0.023 kg
● exp. from week 13	● white	77949	4040849779497	6.99 €	500	1	10.00 cm	6.00 cm	2.30 cm	0.023 kg
● exp. from week 13	● yellow	77950	4040849779503	6.99 €	500	1	10.00 cm	6.00 cm	2.30 cm	0.023 kg

# Keystone Module RJ45 CAT 6A, UTP, Slim & Short

16.5 mm wide, 29 mm deep, for tool-free IDC mounting



- CAT 6A
- RJ45
- UTP
- Slim
- Short

CAT 6A Keystone module in a slim design and 16.5 mm wide for space-saving installation in patch panels – no longer lack of space when inserting several modules next to each other

With a length of only 29 mm, the module reduces the depth required on the back of the panel – handy in network cabinets and environments where cables must not protrude excessively

Quick and easy installation: After inserting the individual wires, simply and effortlessly press the top cover down (TIA 568A/ B colour-coded insulation displacement connector)

STP-shielded RJ45 coupler with robust zinc die-cast housing for flawless transmission of network signals

The module is suitable for Power over Ethernet (PoE+) in accordance with IEEE 802.3at and supports 10 Gigabit Ethernet applications at 500 MHz

Perfect for cable assembly in patch panels or control cabinets and in structured building cabling

The RJ45 socket for field assembly is suitable for solid and stranded wire



				Packaging: Bulk					
Availability	Item no.	EAN	RRP	Pcs./master carton	Pcs./PU	Length	Width	Height	Weight
● exp. from week 13	77951	4040849779510	6.49 €	500	1	10.00 cm	6.00 cm	1.70 cm	0.008 kg



# Keystone Module RJ45 CAT 6A, STP, Slim & Short, Earthing Terminal

14.5 mm wide, 29 mm deep, crocodile type, for tool-free IDC mounting



CAT 6A

RJ45

STP

Slim

Short

CAT 6A Keystone module in a slim design and 14.5 mm wide for space-saving installation in patch panels – no longer lack of space when inserting several modules next to each other

With a length of only 29 mm, the module reduces the depth required on the back of the panel – handy in network cabinets and environments where cables must not protrude excessively

Quick and easy installation without cable ties: After closing the module, simply and effortlessly press the rear cover down (TIA 568A/B colour-coded insulation displacement connector)

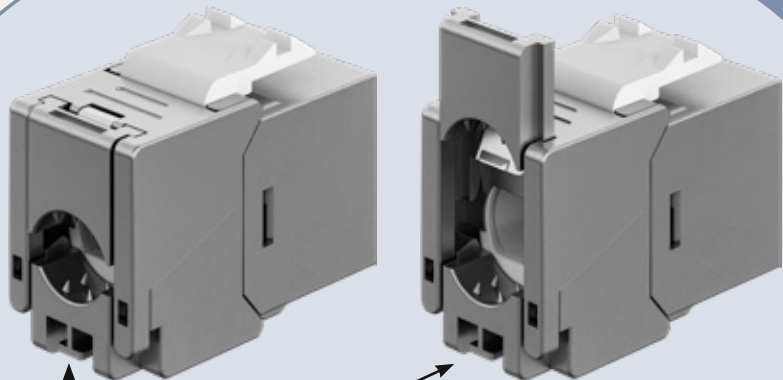
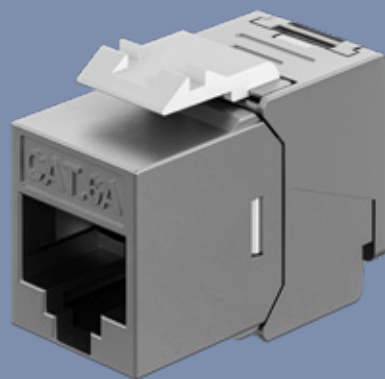
The module is suitable for Power over Ethernet (PoE+) in accordance with IEEE 802.3at and supports 10 Gigabit Ethernet applications at 500 MHz

STP-shielded RJ45 coupling with robust die-cast zinc housing for the flawless transmission of network signals

Perfect for cable assembly in patch panels or control cabinets and in structured building cabling

The RJ45 socket for field assembly is suitable for solid and stranded wire

goobay®



Earthing Connector



Packaging: Bulk

Availability	Item no.	EAN	RRP	Pcs./master carton	Pcs./PU	Length	Width	Height	Weight
● exp. from week 15	77942	4040849779428	7.49 €	500	1	10.00 cm	6.00 cm	2.40 cm	0.016 kg



# HDMI™ Keystone Module with 2x HDMI™ Jack Sockets, 8K @ 60 Hz

HDMI™ A socket > HDMI™ A socket



8K @ 60 Hz

2x HDMI™

Keystone module with 2x vertically aligned HDMI™ sockets for connecting HDMI™ cables routed in the wall

Also suitable for installation in Keystone patch panels, network sockets and housings

The module provides high-resolution, digital image transmission with Ultra HD at up to 8K @ 60 Hz/4K @ 120 Hz (backward compatible) and a data rate of up to 48 Gbit/s

Perfect for connecting home cinema systems, projectors, Blu-ray players or game consoles such as the PlayStation or Xbox

The white colour of the HDMI™ adapter seamlessly blends into Keystone wall plates and enclosures

Gold-plated contacts prevent corrosion and provide extra durability

Housing material: plastic



				Packaging: Bulk					
Availability	Item no.	EAN	RRP	Pcs./master carton	Pcs./PU	Length	Width	Height	Weight
● exp. from week 14	70812	4040849708121	7.99 €	500	1	33.40 cm	17.20 cm	28.90 cm	0.006 kg





# Outdoor Surface-Mounted Box IP44, 2x Keystone Ports

waterproof junction box including cable gland and Keystone bracket, without module



CAT 6A

2x RJ45

IP44

Surface-mounted box with 2x empty ports for Keystone modules, ideal for use in damp rooms and outdoor areas (IP44), e.g. in the garden, basement or garage

Straight cable routing in the box for a 180° cable outlet

With two universal Keystone ports: Suitable for all standardised Keystone modules, from RJ45 for CAT cables to USB or satellite antennas

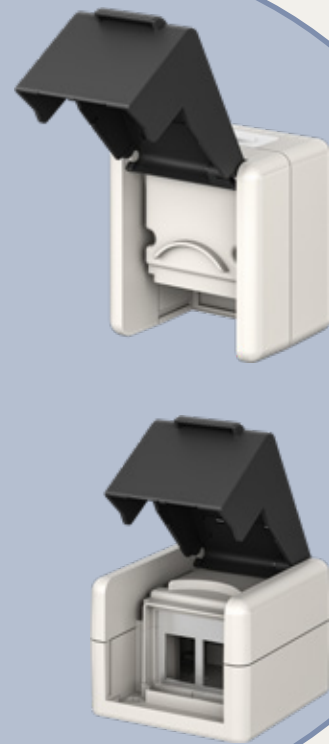
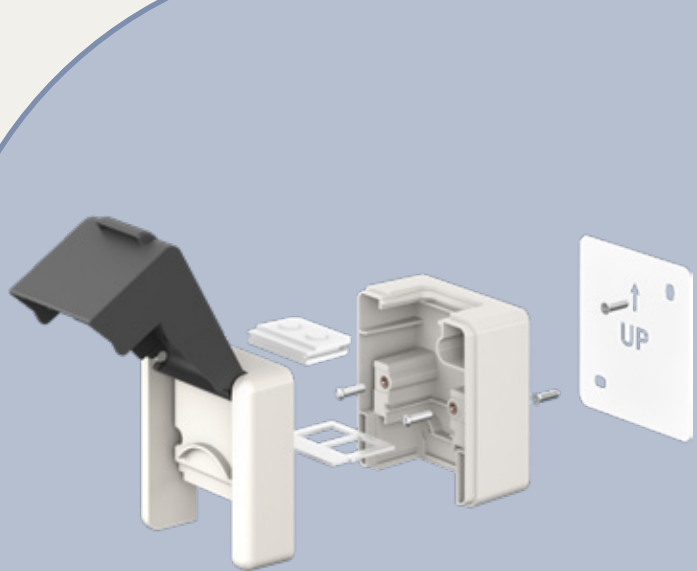
The lid of the box can be easily opened and closed (for use) and, if necessary, you can break off two recesses for a permanent cable passage

The housing is fixed to the wall with screws (mounting material included)

With a clear plastic display to label the individual connections for a perfect cable management

Housing dimensions: 76.3 x 81.4 x 57 mm

gobay®



Packaging: Bulk

Availability	Item no.	EAN	RRP	Pcs./master carton	Pcs./PU	Length	Width	Height	Weight
● exp. from week 15	79169	4040849791697	8.99 €	60	1	16.00 cm	15.00 cm	5.90 cm	0.137 kg



# Mini Motion Detector

for flush ceiling mounting, 360° detection, 6 m/8 m range,  
for indoor use (IP20), LED-compatible



- IP20
- ↻ 360°
- 6 m/8 m
- PIR sensor

The sensor has a range of 8 m when mounted on a wall and 6 m when mounted on a ceiling

Light sensitivity (3 lx to 2000 lx) and switch-off delay (10 s to 8 min) are easily and continuously adjustable behind the cover with the rotary control

Suitable for connecting LED lighting and energy-saving bulbs up to 400 W and incandescent bulbs up to 800 W

With loose cable ends and two mounting eyelets on the controller unit for easy screw-in mounting in flush-mounted boxes, in the ceiling or in cavity walls

With a detection angle of 360°, ideal for surface-mounted ceiling installation, installation height on wall: 1.80 m to 2.50 m, installation height on ceiling: 2.20 m to 4 m

The PIR sensor reacts to the movement of people or animals and activates the connected lighting when it is dark

Replaces the light switch and switches without contact: Particularly practical in rooms that you enter with your hands full, e.g. hallways or utility rooms



				Packaging: Retail Box					
Availability	Item no.	EAN	RRP	Pcs./master carton	Pcs./PU	Length	Width	Height	Weight
● exp. from week 06	79604	4040849796043	9.99 €	50	1	11.00 cm	5.00 cm	5.00 cm	0.075 kg





# Motion Detector

for flush wall mounting, 160° detection,  
9 m range, for indoor use (IP20)



- IP20
- ↺ 160°
- 9 m
- PIR sensor

Can be used as a motion detector or as a regular light switch thanks to the switch with 3 modes: On, Off and PIR

Light sensitivity (3 lx to 2000 lx) and switch-off delay (10 s to 7 min) are easily and continuously adjustable behind the cover with the rotary control

Suitable for connecting LED lighting and energy-saving bulbs up to 200 W and incandescent bulbs up to 500 W

Ideal for horizontal and vertical installation in flush-mounted or cavity wall boxes, installation height: 1.00 to 1.80 m

Perfect for LED lighting as part of home automation or indoor security systems (protection class IP20)

The PIR sensor reacts to the movement of people or animals and activates the connected lighting when it is dark

Replaces the light switch and switches without contact: Particularly practical in rooms that you enter with your hands full, e.g. hallways or utility rooms

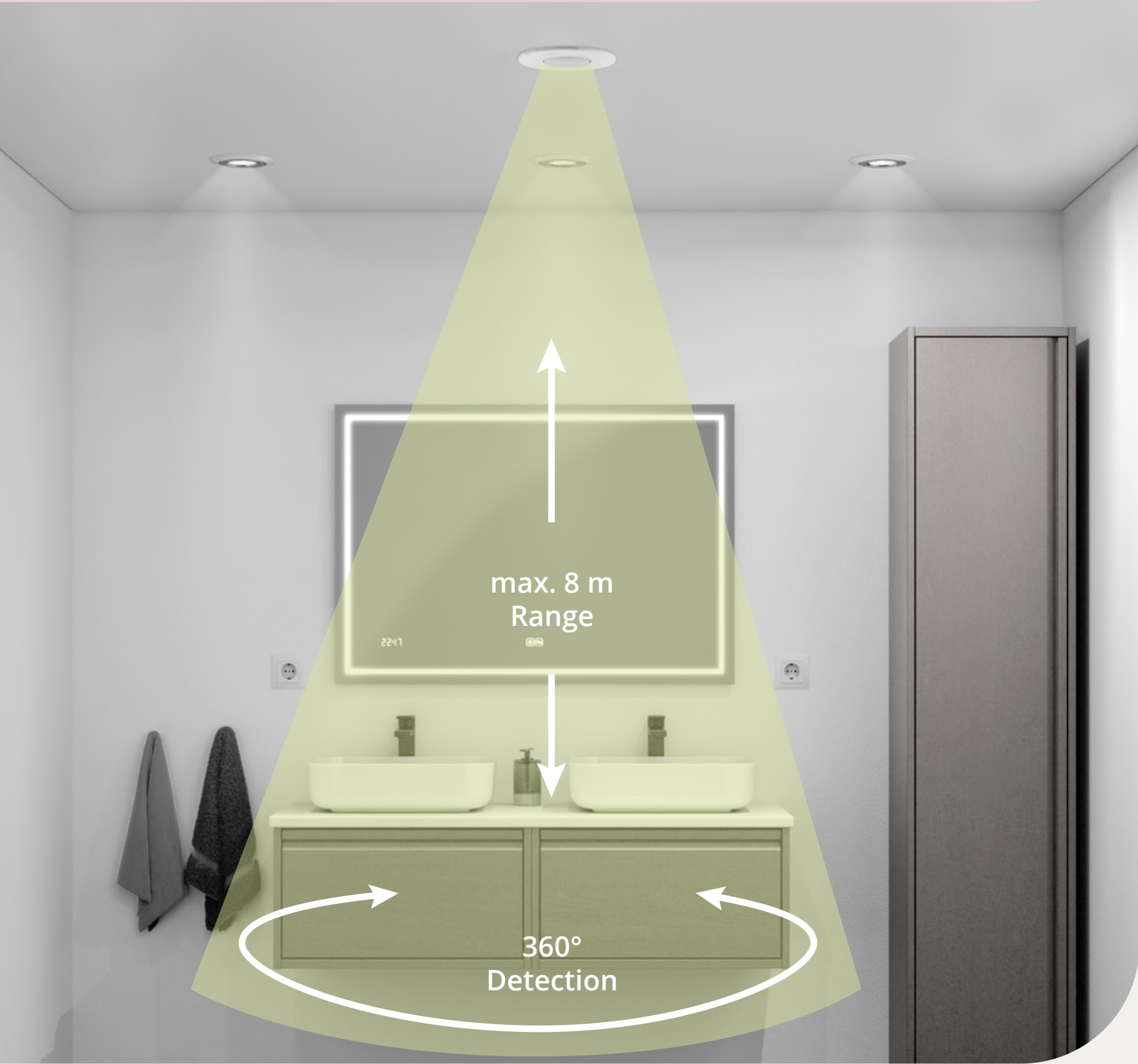


				Packaging: Retail Box					
Availability	Item no.	EAN	RRP	Pcs./master carton	Pcs./PU	Length	Width	Height	Weight
● exp. from week 06	79603	4040849796036	11.99 €	40	1	11.00 cm	8.50 cm	5.20 cm	0.113 kg



# Compact Motion Detector

for flush-mounted ceiling installation, 360° detection, 8 m range, for indoor use (IP20), LED-compatible



- IP20
- ↻ 360°
- 8 m
- PIR sensor

Light sensitivity (3 lx to 2000 lx) and switch-off delay (10 s to 15 min) are easily and continuously adjustable using a rotary control

Discreet appearance, easy to use: The rotary controls for light sensitivity and switch-off delay are located under the sliding cover to adjust the settings at any time – without dismounting and without tools

Suitable for connecting LED lighting and energy-saving bulbs up to 600 W and incandescent bulbs up to 1200 W

With a detection angle of 360°, ideal for flush-mounted ceiling installation, installation height: 1.80 m to 4 m

Perfect for LED lighting as part of home automation or indoor security systems (protection class IP20)

The PIR sensor reacts to the movement of people or animals and activates the connected lighting when it is dark

Replaces the light switch and switches without contact: Particularly practical in rooms that you enter with your hands full, e.g. hallways or utility rooms



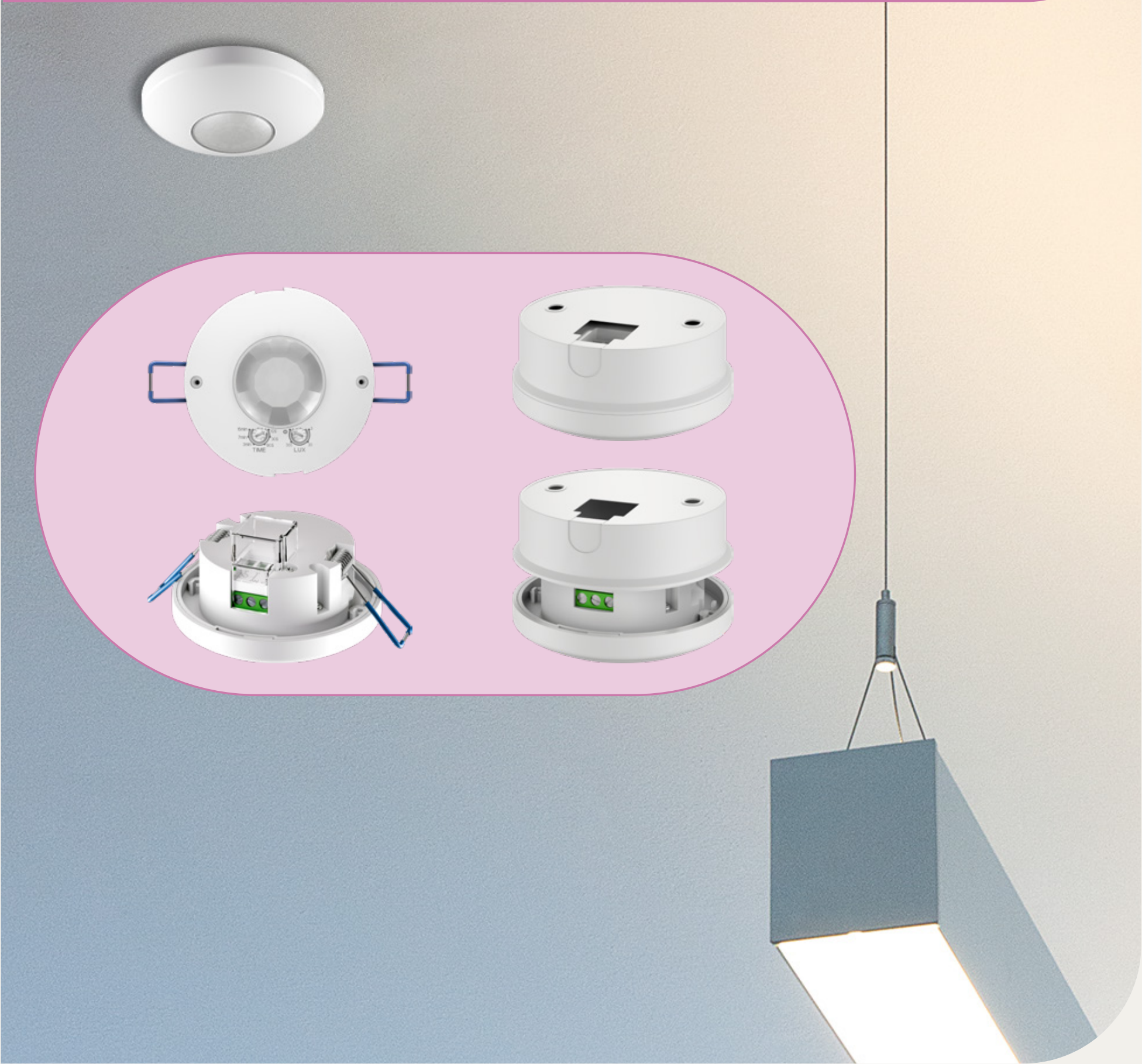
				Packaging: Retail Box					
Availability	Item no.	EAN	RRP	Pcs./master carton	Pcs./PU	Length	Width	Height	Weight
● exp. from week 06	79598	4040849795985	11.99 €	40	1	11.00 cm	8.50 cm	6.00 cm	0.112 kg





# 2-in-1 Motion Detector

for surface and flush mounting, 360° detection, 8 m range, for indoor use (IP20), LED-compatible



- IP20
- ↻ 360°
- 8 m
- PIR sensor

Suitable as a flexible 2-in-1 solution for flush-mounted and surface-mounted installation, including brackets and canopy for the respective installation options

Light sensitivity (3 lx to 2000 lx) and switch-off delay (10 s to 15 min) are easily and continuously adjustable behind the removable cover using a rotary control

Discreet appearance, easy to use: The rotary controls for light sensitivity and switch-off delay are located under the removable cover to adjust the settings at any time – without dismounting and without tools

Suitable for connecting LED lighting and energy-saving bulbs up to 600 W and incandescent bulbs up to 1200 W

With a detection angle of 360°, ideal for flush-mounted ceiling installation, installation height: 2.20 m to 4 m

Perfect for LED lighting as part of home automation or indoor security systems (protection class IP20)

The PIR sensor reacts to the movement of people or animals and activates the connected lighting when it is dark



				Packaging: Retail Box					
Availability	Item no.	EAN	RRP	Pcs./master carton	Pcs./PU	Length	Width	Height	Weight
● exp. from week 06	79602	4040849796029	13.99 €	40	1	11.00 cm	9.00 cm	6.50 cm	0.145 kg



# Motion Detector Slim

for surface-mounted ceiling mounting, 360° detection, 8 m range, for indoor use (IP20), LED-compatible



Slim

IP20

↻ 360°

8 m

PIR sensor

2.5 cm flat

15

Discreet look, easy operation: The cover can be easily twisted off to adjust the light sensitivity and switch-off delay even after installation – without dismantling or screwing

Light sensitivity (3 lx to 2000 lx) and switch-off delay (10 s to 15 min) are easily and continuously adjustable behind the removable cover with the rotary control

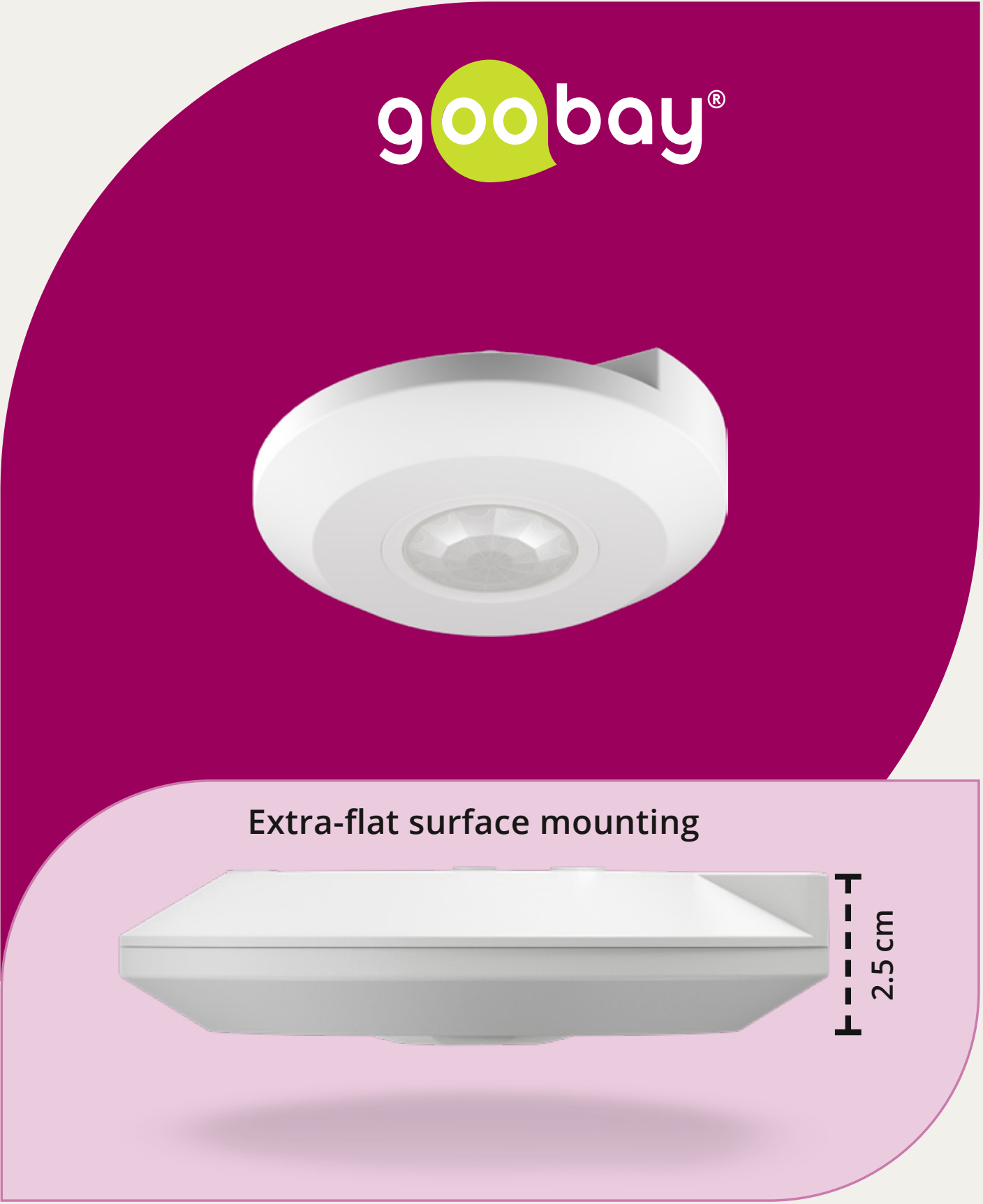
Perfect for LED lighting as part of home automation or indoor security systems

Replaces the light switch and switches without contact: particularly practical in rooms where you enter with your hands full, e.g. hallways or utility rooms

Suitable for connecting LED lighting and energy-saving lamps up to 400 W and incandescent lamps up to 800 W

With a detection angle of 360°, ideal for surface-mounted ceiling installation, installation height: 2.20 m to 4 m

The PIR sensor reacts to the movement of people or animals and activates the connected lighting when it is dark



				Packaging: Retail Box					
Availability	Item no.	EAN	RRP	Pcs./master carton	Pcs./PU	Length	Width	Height	Weight
● exp. from week 06	79605	4040849796050	14.99 €	40	1	11.00 cm	10.70 cm	4.00 cm	0.132 kg



# Motion Detector, Tilttable

for surface-mounted wall installation, 140° detection,  
12 m range, for outdoor use (IP44), LED-compatible



- IP44
- ± 140°
- 12 m
- Infrarot sensor
- ± 90° tiltable

Flexible adjustment: The infrared sensor tilts up and down by 90° for optimised alignment

Light sensitivity (3 lx to 2000 lx) and switch-off delay (10 s to 15 min) can be easily and continuously adjusted using the rotary control on the underside

Suitable for connecting LED lighting and energy-saving bulbs up to 600 W and incandescent bulbs up to 1200 W

Ideal for surface-mounted wall installation (mounting materials included), installation height: 1.80 m to 2.5 m

Splash protection according to protection class IP44, making it suitable for use in outdoor areas and damp rooms

The PIR sensor reacts to the movement of people or animals and activates the connected lighting when it is dark

Replaces the light switch and switches without contact: Practical for monitoring outdoor areas such as carports, house entrances, driveways or gardens



Packaging: Retail Box

Availability	Colour	Item no.	EAN	RRP	Pcs./master carton	Pcs./PU	Length	Width	Height	Weight
● exp. from week 06	● black	79590	4040849795909	9.99 €	30	1	11.00 cm	9.00 cm	9.00 cm	0.192 kg
● exp. from week 06	● white	79589	4040849795893	9.99 €	30	1	11.00 cm	9.00 cm	9.00 cm	0.192 kg



# Motion Detector, Tilttable/Swivelling

for surface-mounted wall installation, 180° detection,  
12 m range, for outdoor use (IP44), LED-compatible



- IP44
- ↺ 180°
- 12 m
- PIR sensor
- Tilttable
- Swivelling

Flexible adjustment: The infrared sensor rotates and tilts for optimised alignment

Light sensitivity (3 lx to 2000 lx) and switch-off delay (10 s to 15 min) can be easily and continuously adjusted using the rotary control on the underside

Suitable for connecting LED lighting and energy-saving lamps up to 400 W and incandescent lamps up to 800 W

Ideal for surface-mounted wall installation (mounting materials included), installation height: 1.80 m to 2.5 m

Splash protection according to protection class IP44, making it suitable for use in outdoor areas and damp rooms

The PIR sensor reacts to the movement of people or animals and activates the connected lighting when it is dark

Replaces the light switch and switches without contact: Practical for monitoring outdoor areas such as carports, house entrances, driveways or gardens



					Packaging: Retail Box					
Availability	Colour	Item no.	EAN	RRP	Pcs./master carton	Pcs./PU	Length	Width	Height	Weight
● exp. from week 06	● black	79592	4040849795923	11.99 €	40	1	11.00 cm	8.50 cm	6.00 cm	0.142 kg
● exp. from week 06	● white	79591	4040849795916	11.99 €	40	1	11.00 cm	8.50 cm	6.00 cm	0.142 kg



# 2-Zone Motion Detector, Tilttable/Swivelling

for surface-mounted wall installation, 180°/360° detection, 12 m range, for outdoor use (IP44), LED-compatible



- IP44
- ↻ 180°/360°
- 12 m
- PIR sensor
- Tilttable
- Swivelling

Double flexibility: With 2 infrared sensors for horizontal (180°) and vertical detection (360°). The head joint can be rotated and tilted for optimised alignment.

Light sensitivity (3 lx to 2000 lx) and switch-off delay (10 s to 15 min) can be easily and continuously adjusted using the rotary control on the underside

Suitable for connecting LED lighting and energy-saving lamps up to 600 W and incandescent lamps up to 1200 W

Ideal for surface-mounted wall installation (mounting materials included), installation height: 1.80 m to 2.50 m

Splash protection according to protection class IP44, making it suitable for use in outdoor areas and damp rooms

The PIR sensor reacts to the movement of people or animals and activates the connected lighting when it is dark



Replaces the light switch and switches without contact: Practical for monitoring outdoor areas such as carports, house entrances, driveways or gardens

					Packaging: Retail Box					
Availability	Colour	Item no.	EAN	RRP	Pcs./master carton	Pcs./PU	Length	Width	Height	Weight
● exp. from week 06	● black	79597	4040849795978	15.99 €	40	1	11.00 cm	8.50 cm	6.00 cm	0.146 kg
● exp. from week 06	● white	79593	4040849795930	11.99 €	40	1	11.00 cm	8.50 cm	6.00 cm	0.146 kg





# Wireless LED Table Lamp, Size S, 25 cm

with touch control, 150 lm, warm white (3000 K)



Wireless

Warm white

Dimmable

IP44

The lamp stands out with its elegant touch control and built-in battery, offering cordless flexibility for use in any location

With its modern design, the lamp blends into any interior: As a living room or bedside lamp, as an eyecatcher in the office or as a table lamp in restaurants

The LED lamp switches between three brightness levels and off mode with a light touch on the top

The high-quality 18650 lithium battery ensures a particularly long service life and an excellent runtime of up to 5 hours at 100 % brightness and up to 12 hours at 20 % brightness

Thanks to its splash water protection (protection class IP44), the table lamp is also perfect for the patio, balcony or garden

The lampshade and base are made of robust metal - for high stability without tipping over and a long service life

Incl. USB charging cable (0.5 m, USB-C™ to USB-A) for easy charging via USB charger, laptop or power bank



goobay®



					Verpackung: Retail Box					
Availability	Colour	Item no.	EAN	RRP	Pcs./master carton	Pcs./PU	Length	Width	Height	Weight
● exp. from week 07	● black	77675	4040849776755	14.95 €	12	1	12.00 cm	10.50 cm	8.00 cm	0.440 kg
● exp. from week 07	● white	77676	4040849776762	14.95 €	12	1	12.00 cm	10.50 cm	8.00 cm	0.440 kg
● exp. from week 07	● green	77677	4040849776779	14.95 €	12	1	12.00 cm	10.50 cm	8.00 cm	0.440 kg
● exp. from week 07	● beige	77678	4040849776786	14.95 €	12	1	12.00 cm	10.50 cm	8.00 cm	0.440 kg



Our principle

**“A good deal  
should be  
win-win!”**



# wentronic

## Thank you for taking an interest

If you have any questions or are interested in joint marketing campaigns, we look forward to hearing from you. Please feel free to contact us at any time.

Wentronic GmbH  
Pillmannstraße 12  
38112 Braunschweig  
Tel/Fax: +49 (0)531-21058-0 /-22  
[www.wentronic.com](http://www.wentronic.com)