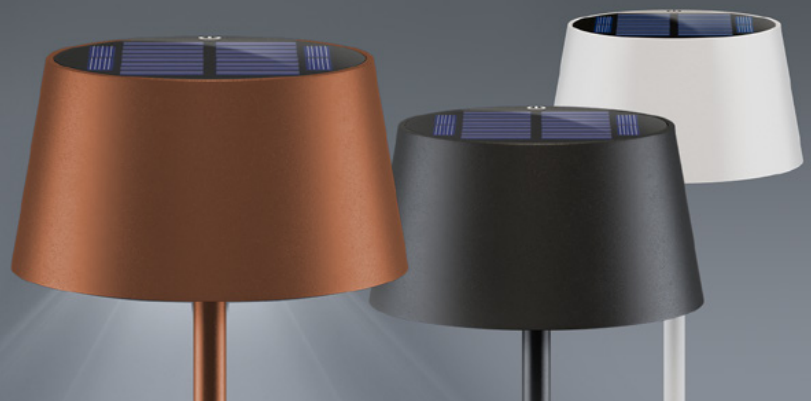
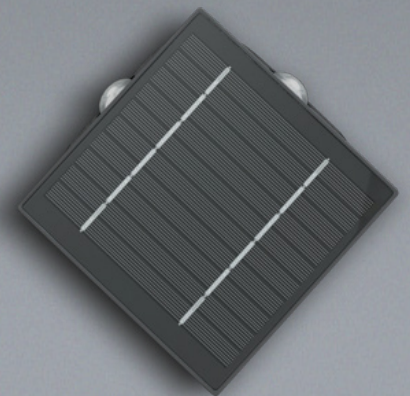
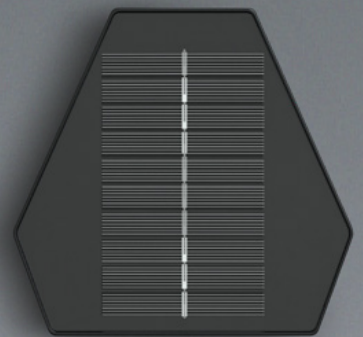


PRODUCT NEWS

wentronic

06 / 2024



2in1 USB Textile Cable, Space Grey/Silver

extra-robust USB-C™ charging cable
with adapter for USB-A devices



Features

The cable is the handy one-cable solution for charging all USB-C™ and USB-A devices when travelling and avoids cable clutter in your luggage

USB-A adapter included to flexibly convert the USB-C™ to USB-C™ cable to a USB-C™ to USB-A cable at any time

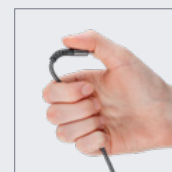
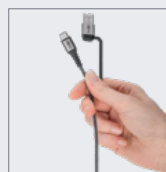
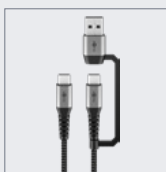
The USB-A adapter is permanently attached to the cable and is therefore always to hand

The USB-C™ charging cable allows for super-fast charging with max. 60 W and high-speed data transfer at up to 480 Mbit/s

The reinforced metal connectors with kink protection are designed for over 10,000 bending cycles, making the USB-C™ cable extremely durable

The braided, durable textile jacket of the USB charging cable has a pleasant feel and is gentle on sensitive surfaces

The USB cable connects smartphones, PCs, laptops, tablets, etc. and also supports the charging function of the Apple MacBook



Availability	Length	Item no.	EAN	RRP	Pcs./master carton	Pcs./PU	Length	Width	Height	Weight
● exp. from WEEK 30	1.00 m	70277	4040849702778	6.99 €	400	1	11.50 cm	10.00 cm	1.60 cm	0.032 kg
● exp. from WEEK 30	2.00 m	70278	4040849702785	7.99 €	240	1	15.40 cm	10.20 cm	1.70 cm	0.072 kg
● exp. from WEEK 30	3.00 m	70279	4040849702792	8.99 €	160	1	15.40 cm	10.20 cm	2.10 cm	0.103 kg

Magnetic Wireless Power Bank 5,000 mAh

attaches magnetically to the back of the phone, ideal for charging and telephoning at the same time



Features

Extremely compact power bank for the inductive charging of smartphones, smartwatches or headphones with up to 15 W

With the magnetic ring, the power bank attaches securely, charging the mobile phone in your pocket on the go or while in use - without covering the camera

For full flexibility, the portable charger is also equipped with 1x USB-C™ output (Power Delivery) for wired fast charging of smart devices with up to 20 W

Completely charged, the battery pack fully recharges a smartphone 1x

The portable charger recharges via the combined USB-C™ input/output (incl. 0.3 m charging cable USB-A to USB-C™)

Handy LEDs indicate the charging status of the portable charger

Compatible with MagSafe-enabled devices such as the Apple iPhone, the Apple AirPods or the Samsung Galaxy S24, S23 and S22

Availability	Item no.	EAN	RRP	Pcs./master carton	Pcs./PU	Length	Width	Height	Weight
● exp. from WEEK 23	70182	4040849701825	29.95 €	40	1	10.00 cm	17.00 cm	2.00 cm	0.179 kg

Magnetic Wireless Power Bank 10,000 mAh

attaches magnetically to the back of the phone, ideal for charging and telephoning at the same time



Features

- Extremely compact power bank for the inductive charging of smartphones, smartwatches or headphones with up to 15 W
- With the magnetic ring, the power bank attaches securely, charging the mobile phone in your pocket on the go or while in use - without covering the camera
- For full flexibility, the portable charger is also equipped with 1x USB-C™ output (Power Delivery) for wired fast charging of smart devices with up to 20 W
- Completely charged, the battery pack fully recharges a tablet 1x or a smartphone approx. 2x
- The portable charger recharges via the combined USB-C™ input/output (incl. 0.3 m charging cable USB-A to USB-C™)
- Handy LEDs indicate the charging status of the portable charger
- Compatible with MagSafe-enabled devices such as the Apple iPhone, the Apple AirPods or the Samsung Galaxy S24, S23 and S22

Availability	Item no.	EAN	RRP	Pcs./master carton	Pcs./PU	Length	Width	Height	Weight
● exp. from WEEK 23	70183	4040849701832	39.95 €	40	1	10.00 cm	17.00 cm	2.00 cm	0.247 kg

Power Bank Compact 10,000 mAh

handy and space-saving design with 10,000 mAh, perfect for travelling



Features

Extremely compact, lightweight power bank with a non-slip surface that fits in any pocket

Ideal for charging up to 2x devices in parallel via USB-A and USB-C™, e.g. smartphone, tablet or laptop

A single battery charge provides for multiple charging of a small device, e.g. smartphone, smartwatch or headphones

With the Quick Charge and Power Delivery modes, the external battery charges devices at high speed with up to 22.5 W

Equipped with an easy-to-read digital display that shows the exact charging percentage of the power bank

Recharge is possible through the combined USB-C™ input/output (incl. 0.3 m charging cable USB-A to USB-C™)

Thanks to the universal USB ports suitable for the devices of many manufacturers, e.g. Apple iPhone or iPad, Samsung Galaxy, Xiaomi, Lenovo or Huawei

Availability	Item no.	EAN	RRP	Pcs./master carton	Pcs./PU	Length	Width	Height	Weight	
● exp. from WEEK 24	65868	4040849658686	29.95 €	40	1	10.00 cm	17.00 cm	2.20 cm	0.228 kg	Retail Box

Power Bank Compact 20,000 mAh

handy and space-saving design with
20,000 mAh, perfect for travelling



Features

Extremely compact, high-performance power bank with a non-slip surface that fits in every pocket or bag

Ideal for charging up to 3x devices in parallel via 2x USB-A and 1x USB-C™, e.g. smartphone, smartwatch or tablet

A single battery charge provides for multiple charging of devices such as smartphones, headphones or laptops

With the Quick Charge and Power Delivery modes, the external battery charges devices at high speed with up to 22.5 W

Equipped with an easy-to-read digital display that shows the exact charging percentage of the power bank

Recharge is possible through the combined USB-C™ input/output or Micro-USB (incl. 0.3 m charging cable USB-A to USB-C™)

Thanks to the universal USB ports suitable for the devices of many manufacturers, e.g. Apple iPhone or iPad, Samsung Galaxy, Xiaomi, Lenovo or Huawei

Availability	Item no.	EAN	RRP	Pcs./master carton	Pcs./PU	Length	Width	Height	Weight
● exp. from WEEK 24	65869	4040849658693	39.95 €	20	1	10.00 cm	17.00 cm	3.50 cm	0.375 kg

USB-C™ PD GaN Multi-Port Fast Charger (240 W)

3x USB-C™ ports (Power Delivery) and
1x USB-A port



GaN



Features

With a powerful 240 W total output at up to 5 A, the Goobay power supply is perfectly tailored to energy-intensive devices such as high-end laptops

The ultra-fast Power Delivery 3.1 port provides up to 140 W, while the other ports simultaneously supply up to 3 additional devices

A generous 4x USB ports reduce your requirements to just one charging adapter - resulting in less charger clutter at home and on the road

Semiconductors with GaN technology allow for faster, more efficient charging and a lighter, more compact design compared to conventional chargers

With Power Delivery 3.1, the USB charger comes with a particularly safe and dynamic charging method that identifies the optimal output power for the connected device

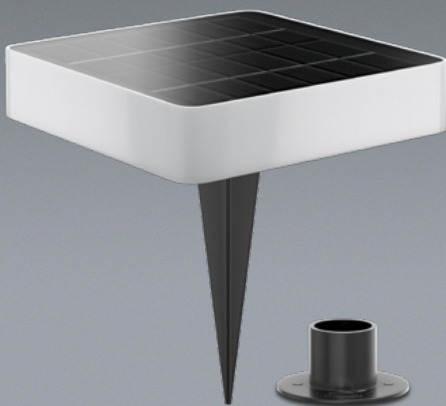
Compatible with notebooks from popular manufacturers such as Apple, Samsung, Lenovo, Huawei, HP, Asus or Acer

The integrated protection electronics of the USB-C™ charger safeguard connected devices against overcurrent, overcharging and overheating (incl. mains cable with safety plug type E/F, 1 m)

Availability	Item no.	EAN	RRP	Pcs./master carton	Pcs./PU	Length	Width	Height	Weight
● exp. from WEEK 25	65885	4040849658853	129.99 €	10	5	8.50 cm	12.50 cm	11.40 cm	0.745 kg

LED Solar Ground Light Level with Ground Spike, 1.5 W

45 lm, 3 modes warm white to cool white (3000, 4200, 6500 K), for outdoor lighting



Features

Sustainable, self-powered solar light with ground spike and integrated rechargeable battery, for wireless and flexible use anywhere

With its clear design and sideways-emitting light, the solar lamp is ideal for subtle illumination in the garden or next to paths

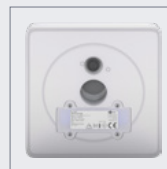
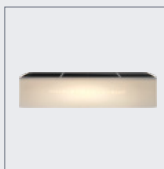
The light switches between 3 light colours (warm, neutral, cool white) and 2 brightness levels (100 %, 50 %) at the touch of a button

Position the lamp in the ground with the spike or alternatively, screw it to a solid surface with the included mounting base, e.g. to patios or paths (lamp dimensions: 141 x 141 x 32 mm)

Thanks to the solar panel on the top, the light charges itself and is independent of a separate power supply

The solar lamp's high-quality 18650 lithium battery ensures an excellent runtime of up to 9 hrs. and a particularly long service life

Thanks to its splash water protection (protection class IP44), the solar lamp is perfect for outdoor use, e.g. as a garden decoration, path lighting or for camping



Availability	Item no.	EAN	RRP	Pcs./master carton	Pcs./PU	Length	Width	Height	Weight
● exp. from WEEK 35	72015	4040849720154	18.99 €	12	1	18.00 cm	4.50 cm	15.00 cm	0.430 kg

LED Solar Ground Light Cube, 1.6 W

45 lm, 4 modes warm white to cool white (3000, 4200, 6500 K) plus red, with remote control, for outdoor lighting



Features

Sustainable, self-powered solar light with remote control and integrated rechargeable battery, for wireless and flexible use anywhere

With its clear design and different light colours, the solar lamp is ideal for subtle illumination of the garden, balcony or patio

The lantern switches between 4 light modes via remote control: neutral white, warm white, cool white, red, dimmable

Thanks to the solar panel on the top, the light charges itself and is independent of a separate power supply

The solar lamp's high-quality 18650 lithium battery ensures an excellent runtime of up to 9 hrs. and a particularly long service life

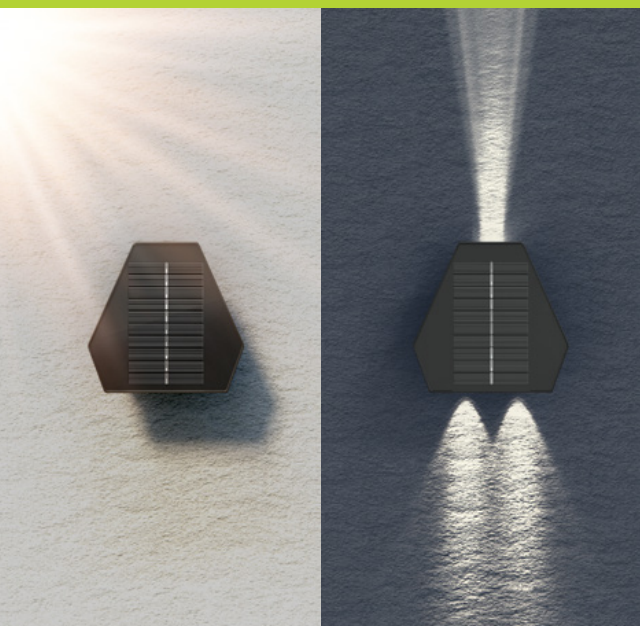
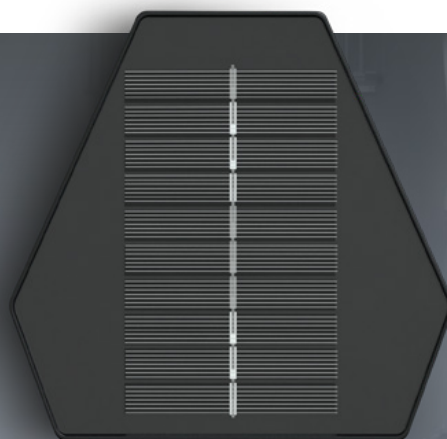
Thanks to its splash water protection (protection class IP44), the solar lamp is perfect for outdoor use, e.g. as a garden decoration, path lighting or for camping

Dimensions: 145 x 145 x 190 mm, supplied with remote control and CR2025 button cell

Availability	Item no.	EAN	RRP	Pcs./master carton	Pcs./PU	Length	Width	Height	Weight
● exp. from WEEK 35	72016	4040849720161	29.99 €	8	1	16.00 cm	16.00 cm	21.00 cm	0.740 kg

LED Solar Wall Light Diamond, 1.2 W

45 lm, 3 modes warm white to cool white (3000, 4200, 6500 K), for indirect outdoor lighting



Features

Sustainable, self-powered solar light for easy installation on house walls - without the need for a separate power supply

Thanks to protection class IP44, the lamp is perfect for outdoor lighting, e.g. for the balcony, terrace, stairways, footpaths or garden

With two LED spots placed next to each other for targeted illumination of the floor, roof truss, etc.

Emits a warm white, neutral white or cool white light colour and 2 brightness levels (50 %, 100 %) at the touch of a button

The solar lamp's high-quality 18650 lithium battery ensures an excellent runtime of up to 10 hrs. and a particularly long service life

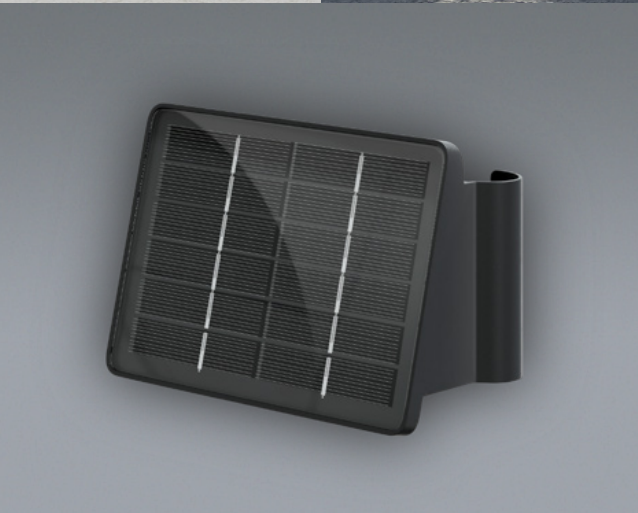
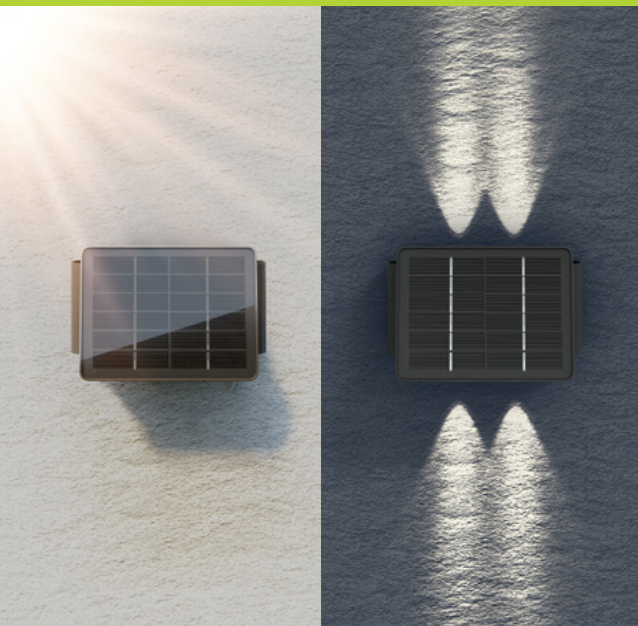
Incl. mounting material for easy, carefree installation of the outdoor light



Availability	Item no.	EAN	RRP	Pcs./master carton	Pcs./PU	Length	Width	Height	Weight
● exp. from WEEK 35	72017	4040849720178	14.99 €	16	1	15.00 cm	5.50 cm	14.00 cm	0.320 kg

LED Solar Wall Light Quadros, 1.2 W

50 lm, 3 modes warm white to cool white (3000, 4200, 6500 K), for indirect outdoor lighting



Features

Sustainable, self-powered solar light for easy installation on house walls - without the need for a separate power supply

Thanks to protection class IP44, the lamp is perfect for outdoor lighting, e.g. for the balcony, terrace, stairways, footpaths or garden

With symmetrical spot arrangement: two LED spots opposite each other on two sides for targeted illumination of the floor, roof truss, etc.

Emits a warm white, neutral white or cool white light colour and 2 brightness levels (50 %, 100 %) at the touch of a button

The angled solar panel provides perfect light incidence when charging

The solar lamp's high-quality 18650 lithium battery ensures an excellent runtime of up to 10 hrs. and a particularly long service life

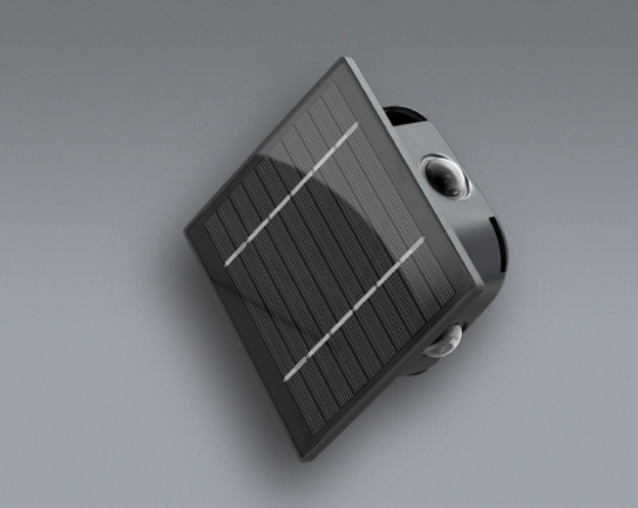
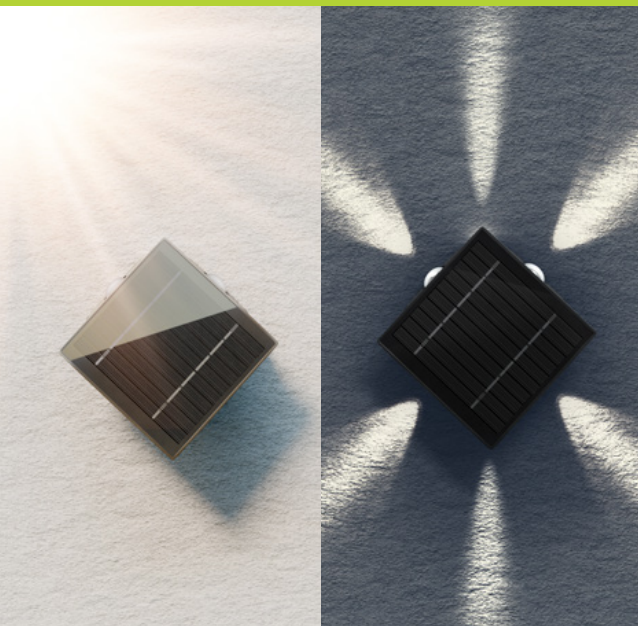
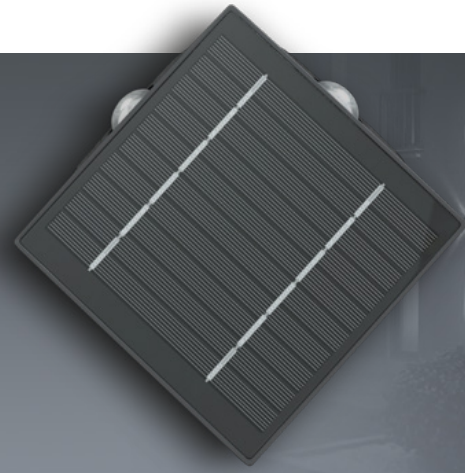
Incl. mounting material for easy, carefree installation of the outdoor light



Availability	Item no.	EAN	RRP	Pcs./master carton	Pcs./PU	Length	Width	Height	Weight
● exp. from WEEK 35	72018	4040849720185	17.99 €	12	1	18.00 cm	8.00 cm	12.00 cm	0.420 kg

LED Solar Wall Light Rhombus , 1.6 W

30 lm, 3 modes warm white to cool white (3000, 4200, 6500 K), for indirect outdoor lighting



Features

Sustainable, self-powered solar light for easy installation on house walls - without the need for a separate power supply

Thanks to protection class IP44, the lamp is perfect for outdoor lighting, e.g. for the balcony, terrace, stairways, footpaths or garden

With symmetrical spot arrangement: six LED spots are evenly arranged for targeted illumination of the floor, roof truss, etc.

Emits a warm white, neutral white or cool white light colour and 2 brightness levels (50 %, 100 %) at the touch of a button

The angled solar panel provides perfect light incidence when charging

The solar lamp's high-quality, replaceable 18650 lithium battery ensures an excellent runtime of up to 10 hrs. and a particularly long service life

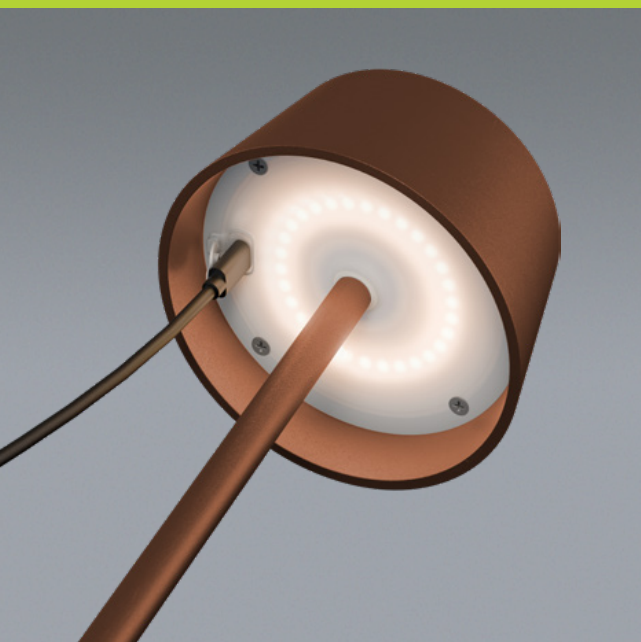
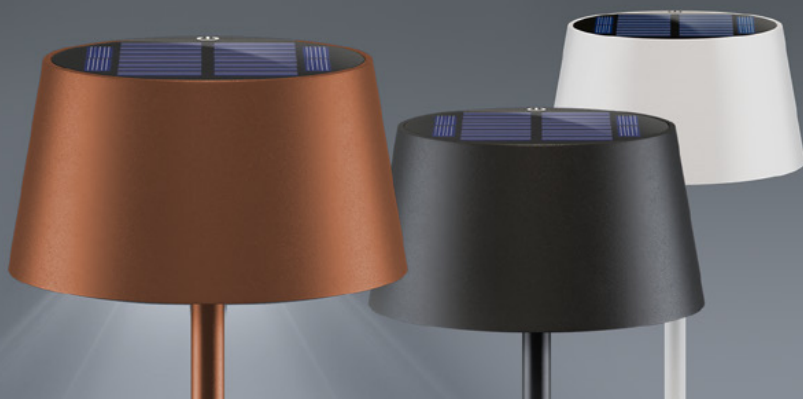
Incl. mounting material for easy, carefree installation of the outdoor light



Availability	Item no.	EAN	RRP	Pcs./master carton	Pcs./PU	Length	Width	Height	Weight
● exp. from WEEK 35	72021	4040849720215	15.99 €	12	1	14.50 cm	8.00 cm	14.50 cm	0.400 kg

Wireless LED Solar Table Lamp

with touch control, 150 lm, warm white (3000 K), infinitely dimmable



Features

The lamp stands out with its elegant touch control and built-in battery, offering cordless flexibility for use in any location

With its modern design, the lamp blends into any interior: As a living room or bedside lamp, as an eye-catcher in the office or as a table lamp in restaurants

The LED lamp switches between on/off with a light touch on the top side; a long touch enables stepless dimming (30-150 lm)

The high-quality 18650 lithium battery ensures an excellent runtime of up to 6 hrs. and a particularly long service life

Thanks to its splash water protection (protection class IP44), the table lamp is also perfect for the patio, balcony or garden

The lampshade and base are made of robust metal - for high stability without tipping over and a long service life

Incl. USB charging cable (1 m, USB-C™ to USB-A) for alternative charging via USB charger, laptop or power bank



Availability	Colour	Item no.	EAN	RRP	Pcs./master carton	Pcs./PU	Length	Width	Height	Weight
● exp. from WEEK 35	black	72026	4040849720260	19.99 €	6	1	12.00 cm	12.00 cm	32.00 cm	0.630 kg
● exp. from WEEK 35	white	73929	4040849739293	19.99 €	6	1	12.00 cm	12.00 cm	32.00 cm	0.630 kg
● exp. from WEEK 35	bronze	73932	4040849739323	19.99 €	6	1	12.00 cm	12.00 cm	32.00 cm	0.630 kg

Wireless LED Table Lamp

with touch control, 180 lm, warm white (3000 K), infinitely dimmable



Features

The lamp stands out with its elegant touch control and built-in battery, offering cordless flexibility for use in any location

With its modern design, the lamp blends into any interior: As a living room or bedside lamp, as an eye-catcher in the office or as a table lamp in restaurants

The LED lamp switches between on/off with a light touch on the top side; a long touch enables stepless dimming (30 - 180 lm)

The high-quality 18650 lithium battery ensures an excellent runtime of up to 4 hrs. and a particularly long service life

Thanks to its splash water protection (protection class IP44), the table lamp is also perfect for the patio, balcony or garden

The lampshade and base are made of robust metal - for high stability without tipping over and a long service life

Incl. USB charging cable (1 m, USB-C™ to USB-A) for easy charging via USB charger, laptop or power bank



Availability	Colour	Item no.	EAN	RRP	Pcs./master carton	Pcs./PU	Length	Width	Height	Weight
● exp. from WEEK 35	black	72024	4040849720246	16.99 €	6	1	12.00 cm	12.00 cm	37.00 cm	0.950 kg
● exp. from WEEK 35	white	73927	4040849739279	16.99 €	6	1	12.00 cm	12.00 cm	37.00 cm	0.950 kg
● exp. from WEEK 35	bronze	73930	4040849739309	16.99 €	6	1	12.00 cm	12.00 cm	37.00 cm	0.950 kg

Wireless LED Table Lamp RGBW

with touch control, 150 lm, 4 light modes, RGB light, warm white (3000 K), infinitely dimmable



Features

The lamp stands out with its elegant touch control and built-in battery, offering cordless flexibility for use in any location

With its modern design, the lamp blends into any interior: As a living room or bedside lamp, as an eye-catcher in the office or as a table lamp in restaurants

The LED lamp switches between on/off and also enables numerous RGBW colour options by a light touch on the top side and dimming by a long touch

The high-quality 18650 lithium battery ensures an excellent runtime of up to 4 hrs. and a particularly long service life

Thanks to its splash water protection (protection class IP44), the table lamp is also perfect for the patio, balcony or garden

The lampshade and base are made of robust metal - for high stability without tipping over and a long service life

Incl. USB charging cable (1 m, USB-C™ to USB-A) for easy charging via USB charger, laptop or power bank



Availability	Colour	Item no.	EAN	RRP	Pcs./master carton	Pcs./PU	Length	Width	Height	Weight
● exp. from WEEK 35	black	72025	4040849720253	19.99 €	6	1	12.00 cm	12.00 cm	37.00 cm	0.950 kg
● exp. from WEEK 35	white	73928	4040849739286	19.99 €	6	1	12.00 cm	12.00 cm	37.00 cm	0.950 kg
● exp. from WEEK 35	bronze	73931	4040849739316	19.99 €	6	1	12.00 cm	12.00 cm	37.00 cm	0.950 kg

LCD Battery Tester

for standard and photo batteries and all common button cells



Features

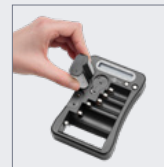
Easy-to-use Goobay battery tester to check the charge status of many common batteries and rechargeable batteries

The clearly understandable LC display shows the voltage status in the range between poor and good by means of a level indicator

The handy, compact format makes the battery checker easy to store in any toolbox or drawer

The universal battery tester is suitable for the following battery types: 9 V Block, AAA (Micro), AA (Mignon), D (Mono), N (Lady), CR 2, CR123A, 2CR5, CR-V3, CR2016, CR2025, CR2032, LR44, CR-P2

Operated by 1x AAA battery (not included in delivery)



Availability	Item no.	EAN	RRP	Previous	Pcs./master carton	Pcs./PU	Length	Width	Height	Weight
● exp. from WEEK 30	72511	4040849725111	24.98 €	64889	50	1	14.00 cm	9.50 cm	3.00 cm	0.119 kg