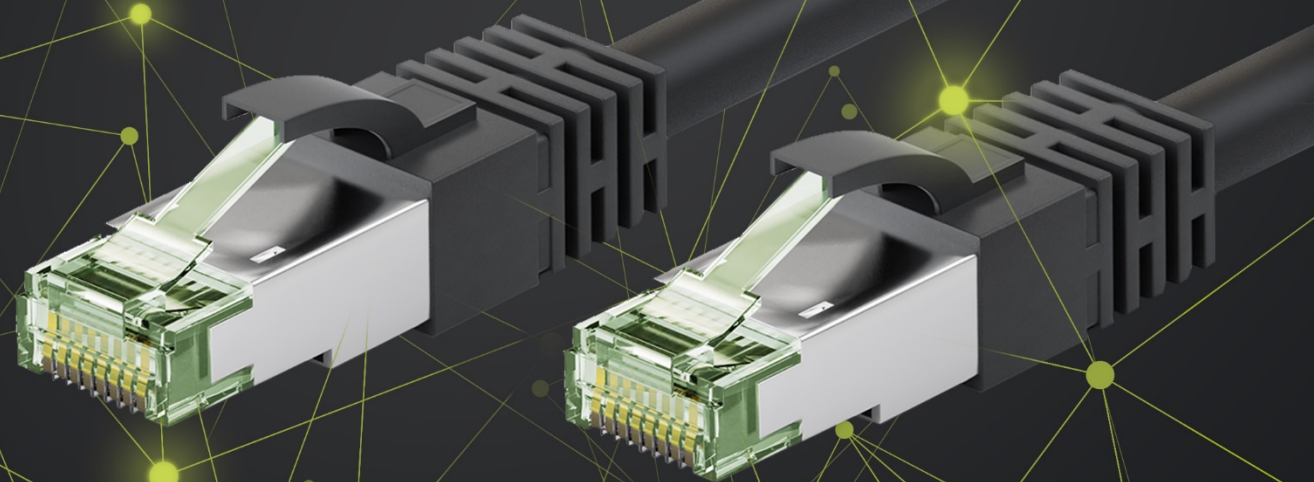




NETWORK TECHNOLOGY 2021

ONE RANGE. MANY ADVANTAGES.



DIVERSE & AVAILABLE

THE NETWORK RANGE



- 01 PATCH CABLES
 - 02 OUTDOOR CABLES
 - 03 NETWORK INSTALLATION CABLES
 - 04 OPTICAL FIBRE CABLES
 - 05 PATCH PANELS
 - 06 NETWORK SWITCHES
 - 07 KEYSTONES
 - 08 CABLE MANAGEMENT & PROTECTION
 - 09 INSTALLATION ACCESSORIES
-
- A decorative graphic on the right side of the page consisting of a network of thin, light green lines connecting several small green circular nodes. The nodes are arranged in a way that suggests a complex network structure, with some nodes acting as central hubs and others as peripheral points.

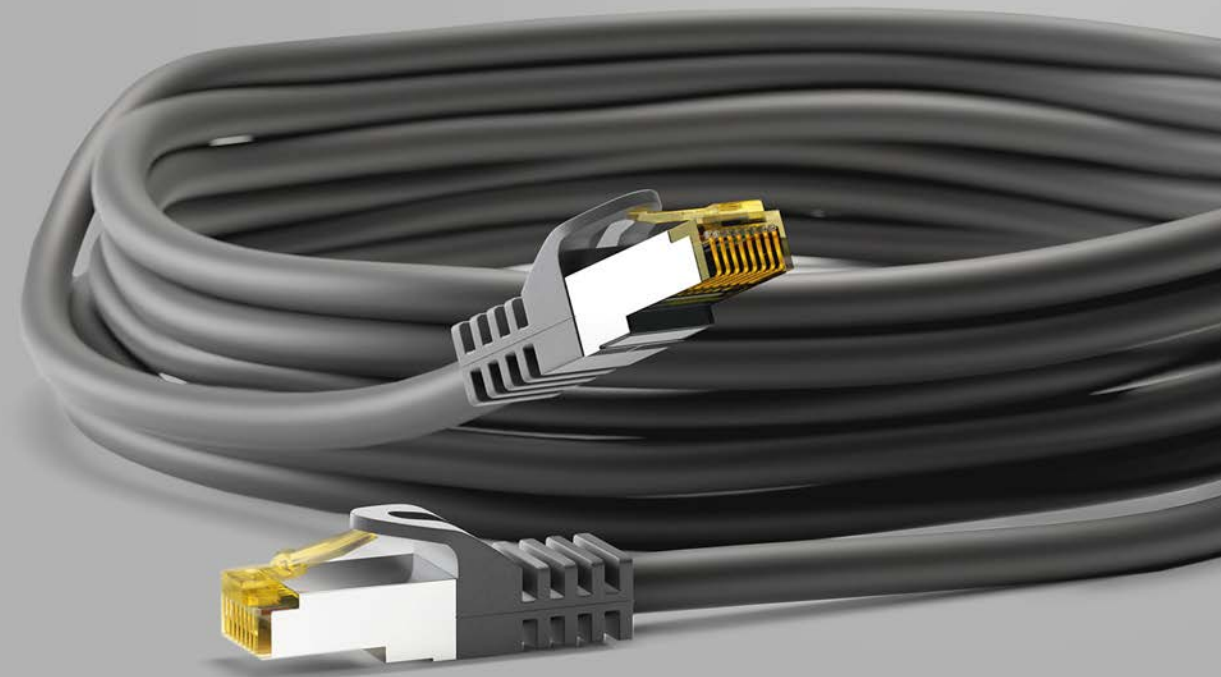
01 PATCH CABLES

PROVEN & PROFESSIONAL PATCH CABLES

THE FOUNDATION FOR HIGH SPEED APPLICATIONS
FOR OFFICE AND BUILDING CABLING
DIFFERENT PERFORMANCE CLASSES



OVER **30 SERIES**
IN MANY DESIGNS
1,500 SKUS



01 PATCH CABLES

BANDWIDTH OPTIONS CABLE TYPES

5 DIFFERENT CATEGORIES OF CABLES

AVAILABLE IN DIFFERENT STANDARDIZED
BANDWIDTHS:

CAT 5E	=	100 MHz
CAT 6	=	250 MHz
CAT 6A	=	500 MHz
CAT 7	=	600 MHz
CAT 8.1	=	2000 MHz



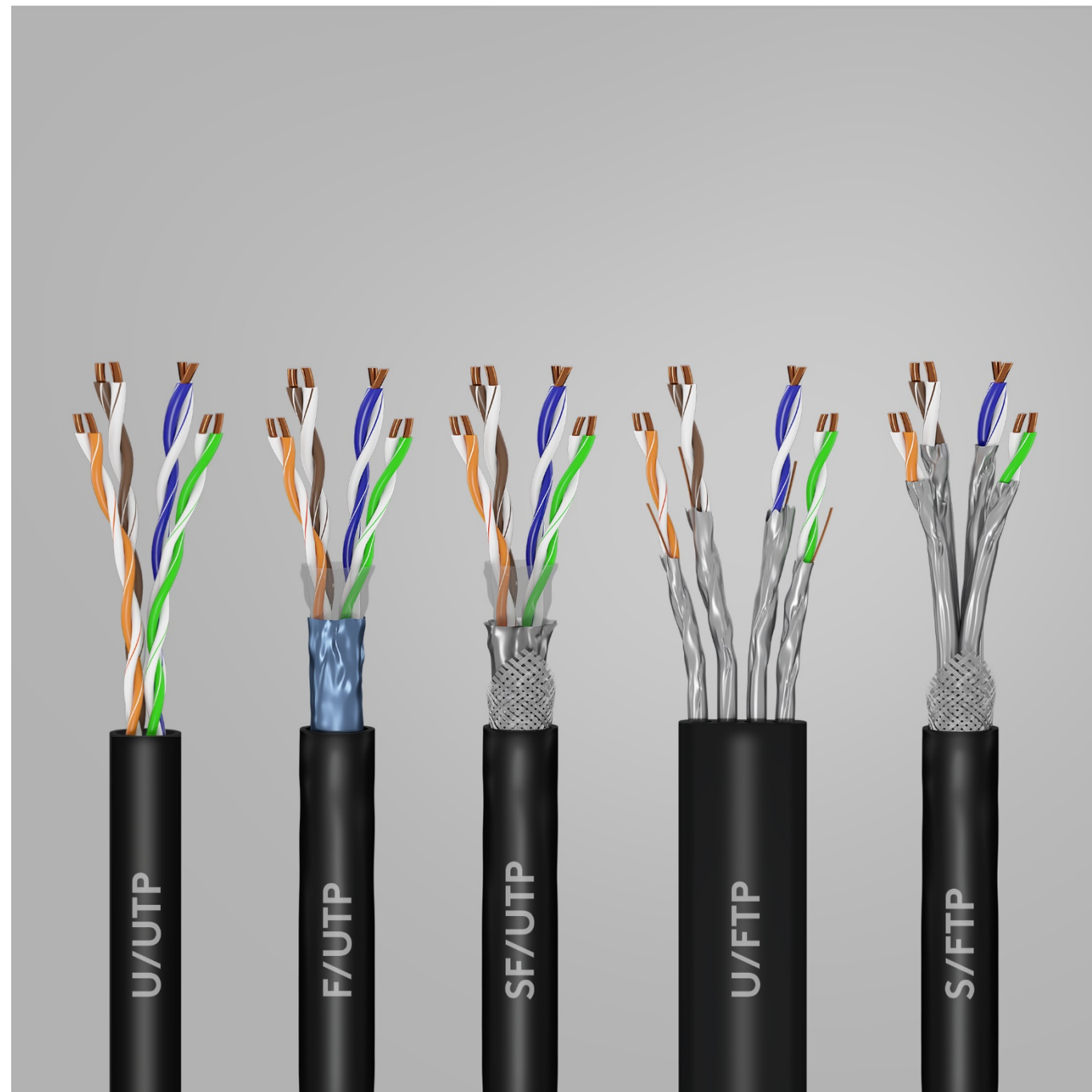
* CAT 7 raw cable with CAT 6A connectors

01 PATCH CABLES

WITHOUT INTERFERENCE SHIELDING

FIVE DIFFERENT TYPES OF SHIELDING

PROTECT AGAINST ELECTROMAGNETIC
INTERFERENCE



01 PATCH CABLES

HIGH QUALITY MATERIALS

FROM COST-EFFICIENT TO HALOGEN-FREE



COPPER
PURE OR MIXED

PVC OR PE

LSZH

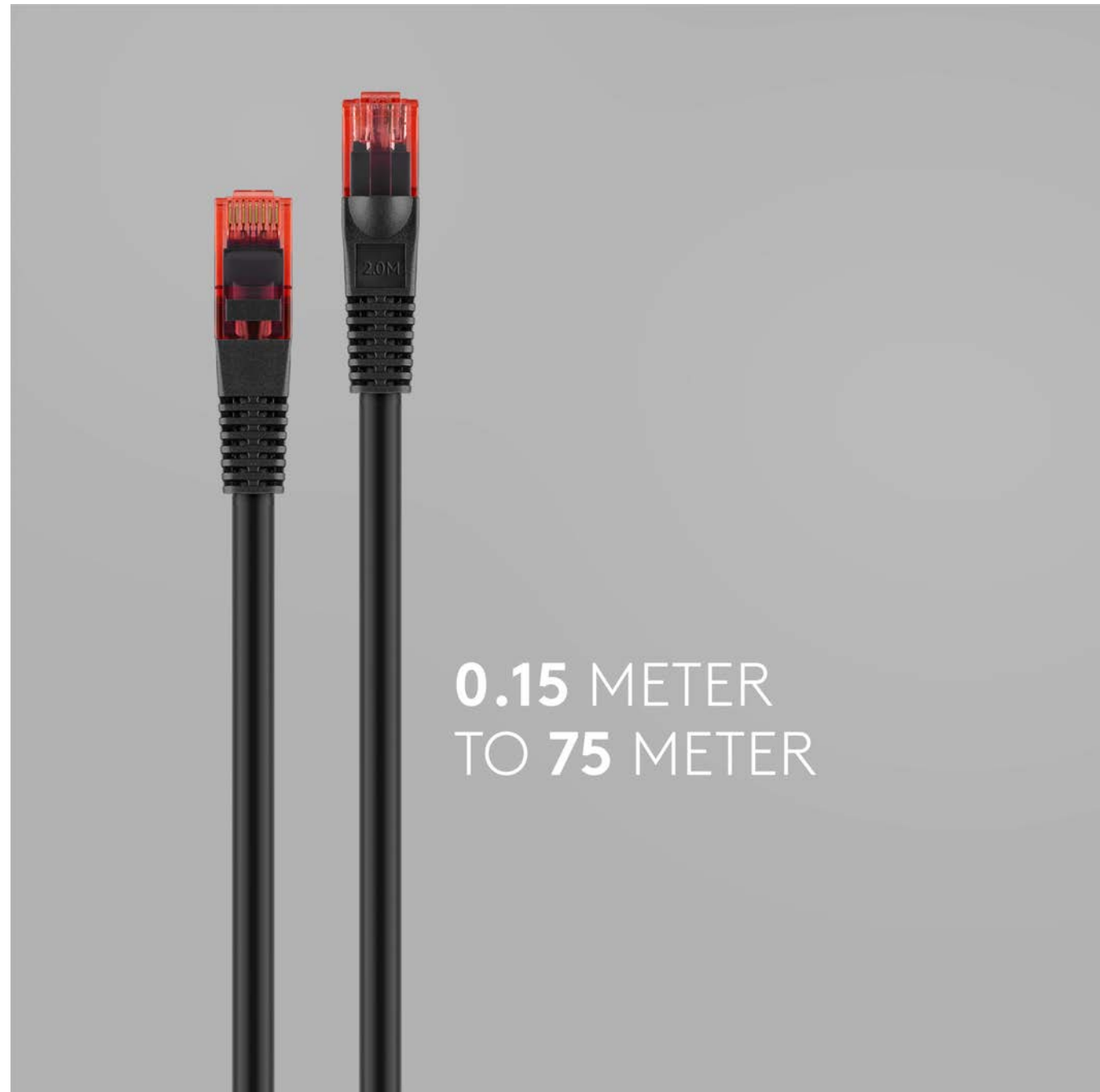


01 PATCH CABLES

FIT IN SHORT AND LONG

UP TO 18 DIFFERENT CABLE LENGTHS

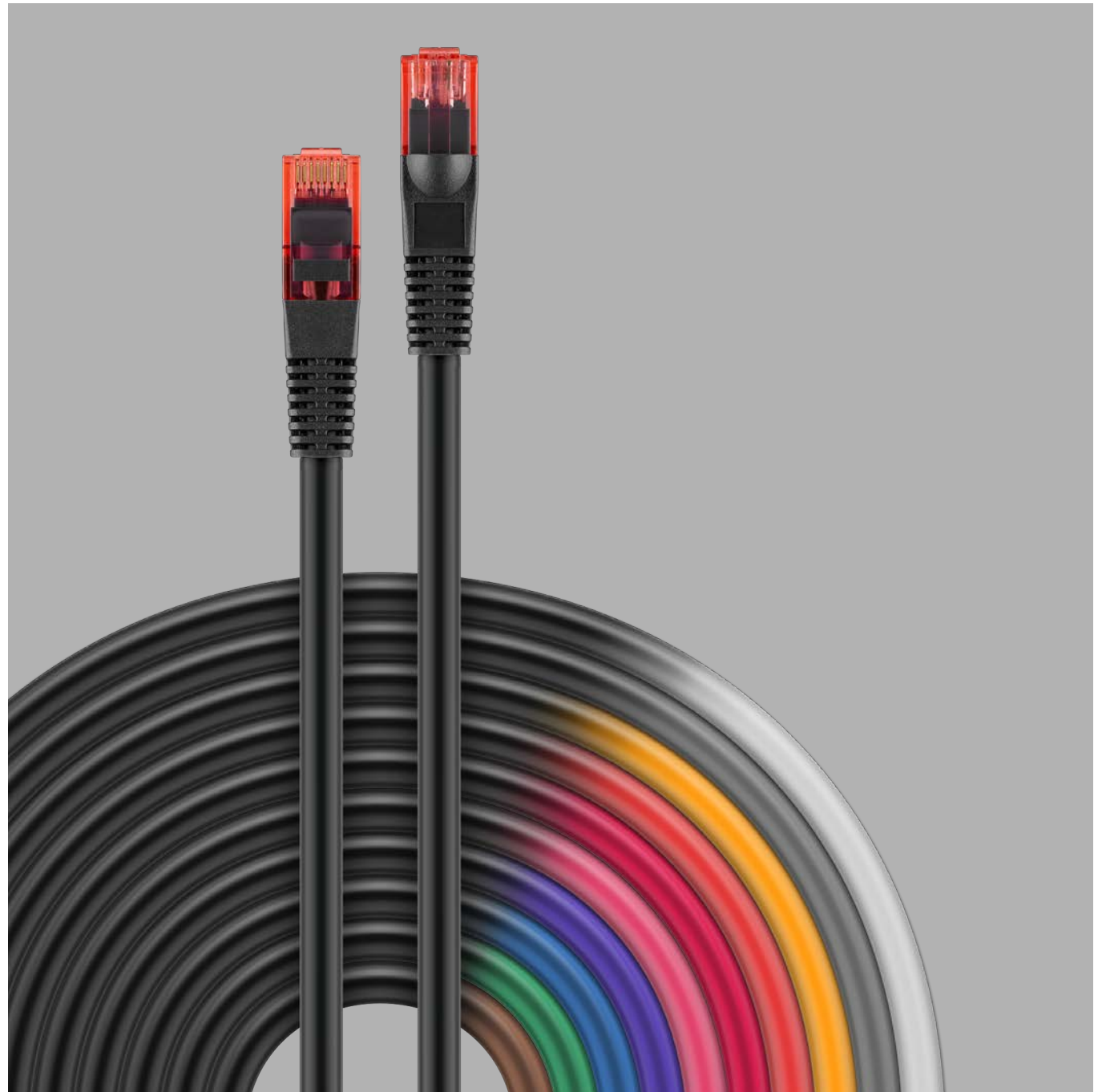
LENGTH STAMPED ON ALMOST ALL RJ45
CONNECTORS AND EASY TO READ



01 PATCH CABLES

CLEARLY STRUCTURED 11 CABLE COLOURS

FOR STRUCTURED CABLING
COLORS FACILITATE ORIENTATION



01 PATCH CABLES

INTUITIVE PLUGS WITH COLOR CODE

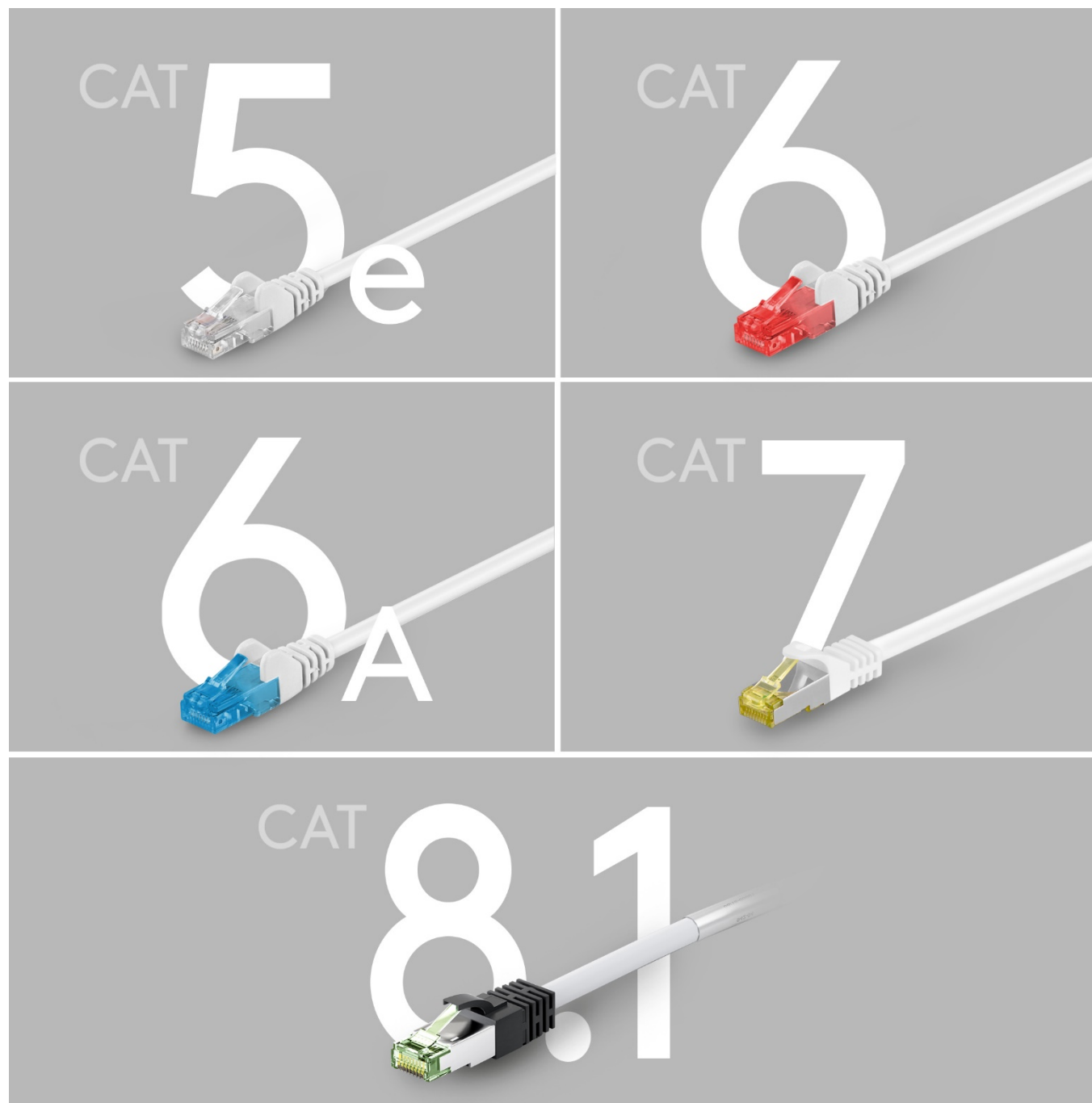
CAT 5E

CAT 6

CAT 6A

CAT 7 RAW CABLE

CAT 8.1



01 PATCH CABLES

OUTSTANDING THIN & FLEXIBLE SLIM & FLAT CABLES

SLIM PATCH CABLE

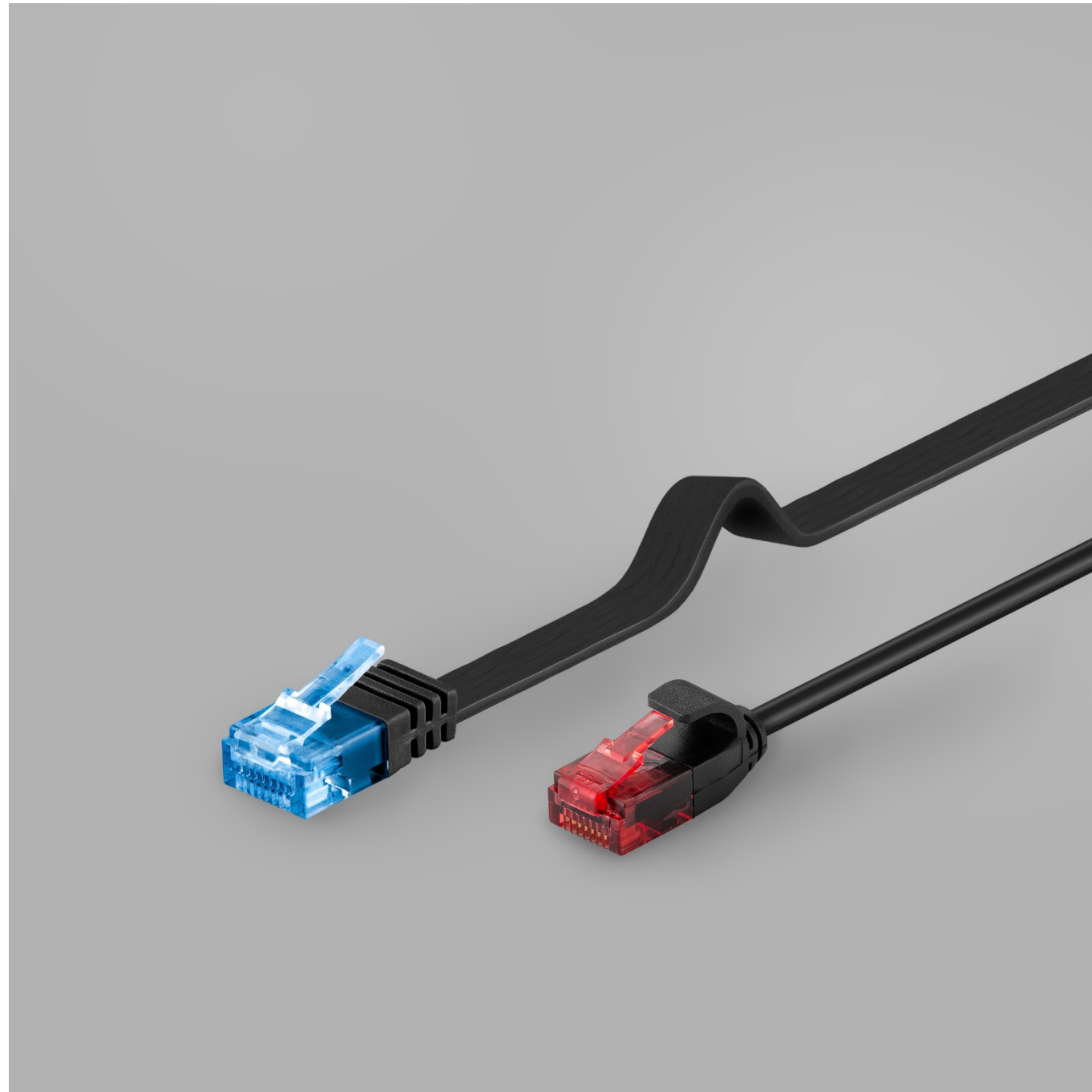
AVAILABLE AS CAT 6 U/UTP

EXTREMELY FLEXIBLE

FLAT PATCH CABLE

AVAILABLE AS CAT 5E/CAT 6 & CAT 6A

SHIELDED OR UNSHIELDED



01 PATCH CABLES

SPACE SAVING ANGLED PLUGS

1 x 90° ANGLED OR 2 x 90° ANGLED
SHIELDED OR UNSHIELDED



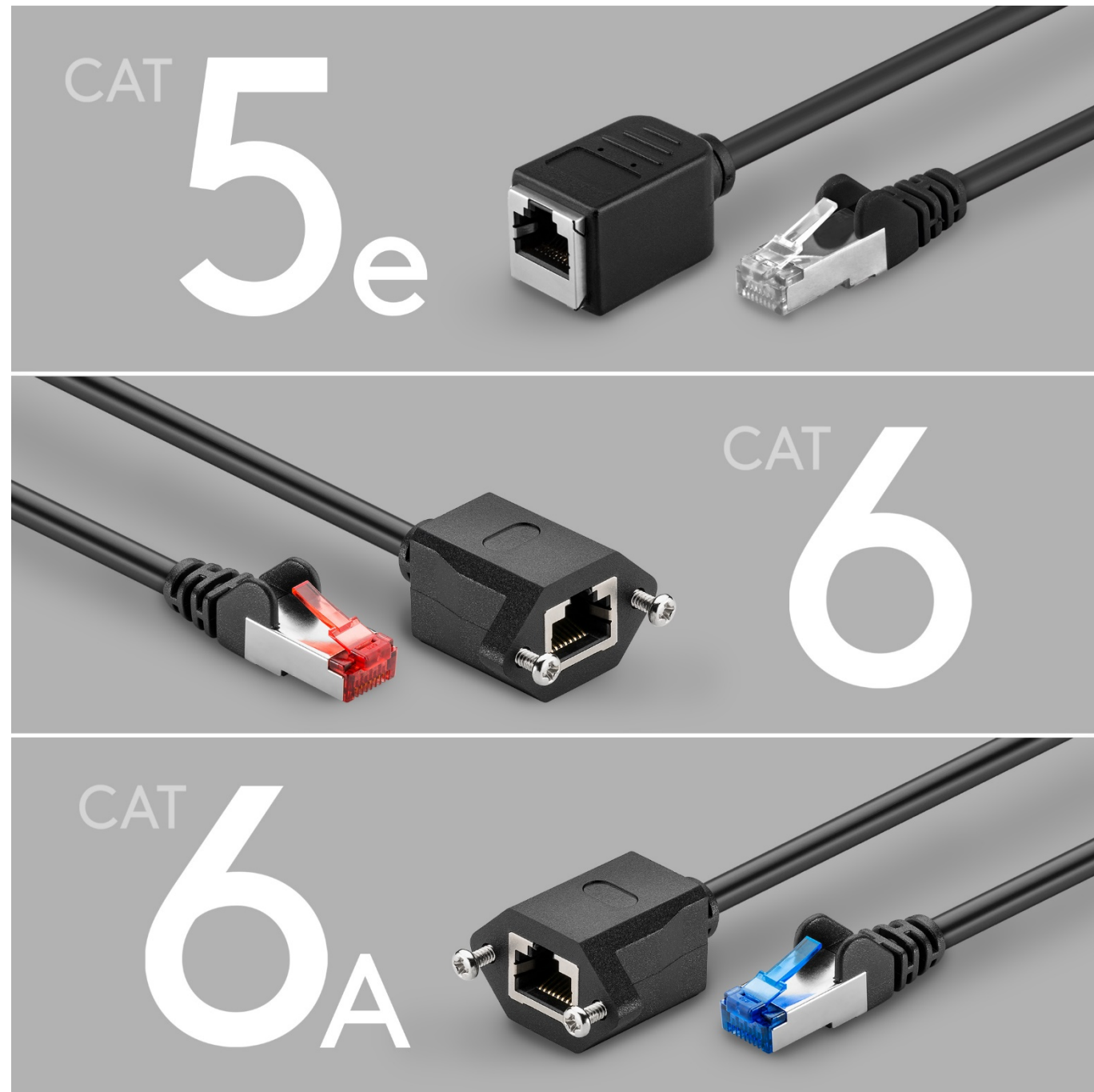
01 PATCH CABLES

EXTENSIBLE CABLE EXTENSIONS

FOR EASY EXTENSION OF CABLES

OR FOR RELOCATING HARD TO REACH
CONNECTORS

AVAILABLE AS CAT 5E, CAT 6 AND 6A



02 OUTDOOR CABLES

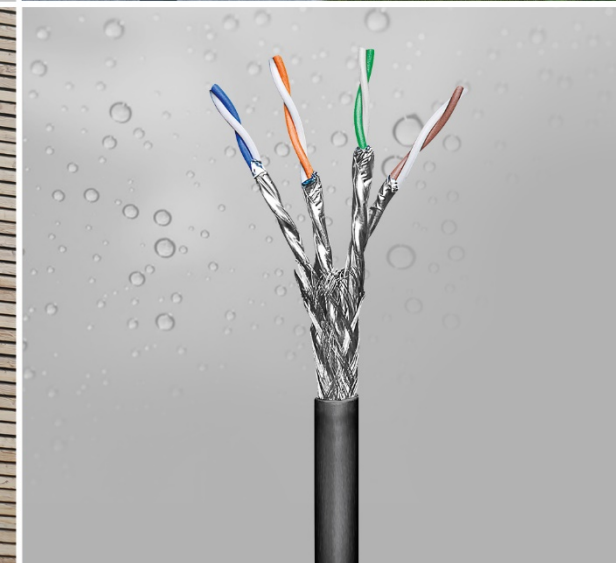
ROBUST, WEATHERPROOF & STRONG AGAINST UV OUTDOOR CABLES

AVAILABLE AS CAT 5E AND CAT 6

SHIELDED OR UNSHIELDED

AS PATCH CABLE OR INSTALLATION CABLE

OPTIMAL FOR GARDEN, TERRACES, BUILDING
FACADES, CAMPING



02 OUTDOOR CABLES

DUST & WATERPROOF MODULAR COUPLERS

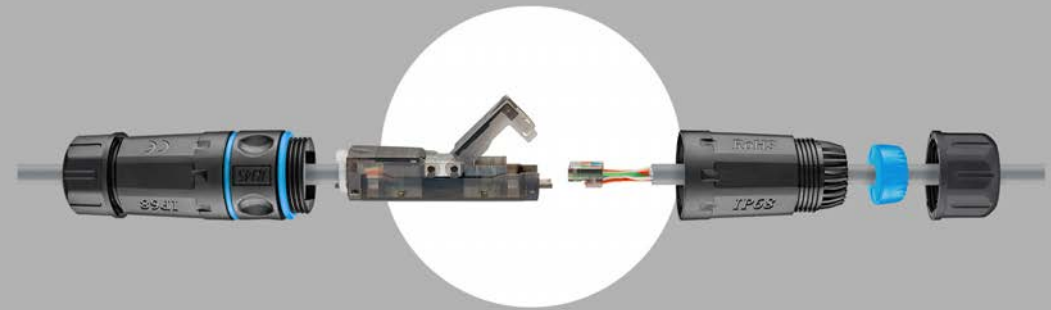
FOR CONNECTING OR COUPLING

FOR IDC* MOUNTING OR RJ45 CONNECTOR

CAT6 OR CAT 6A

SHIELDED OR UNSHIELDED

*INSULATION DISPLACEMENT CONNECTOR



CONNECT



COUPLE

03 NETWORK INSTALLATION CABLES

UP TO 500 METERS LONG NETWORK INSTALLATION CABLES

90 ARTICLES

AVAILABLE AS CAT 5E, 6, 6A, 7, 7A, 7A+

SHIELDED AND UNSHIELDED

SOLID OR STRANDED INNER CONDUCTOR

PVC/PE OR LSZH

FROM OUTDOOR TO HALOGEN FREE

LENGTHS IN M: 50, 100, 250, 305, 500



04 OPTICAL FIBRE CABLES

ULTRA FAST OPTICAL FIBRE CABLES

DATA TRANSMISSION AT LIGHT SPEED

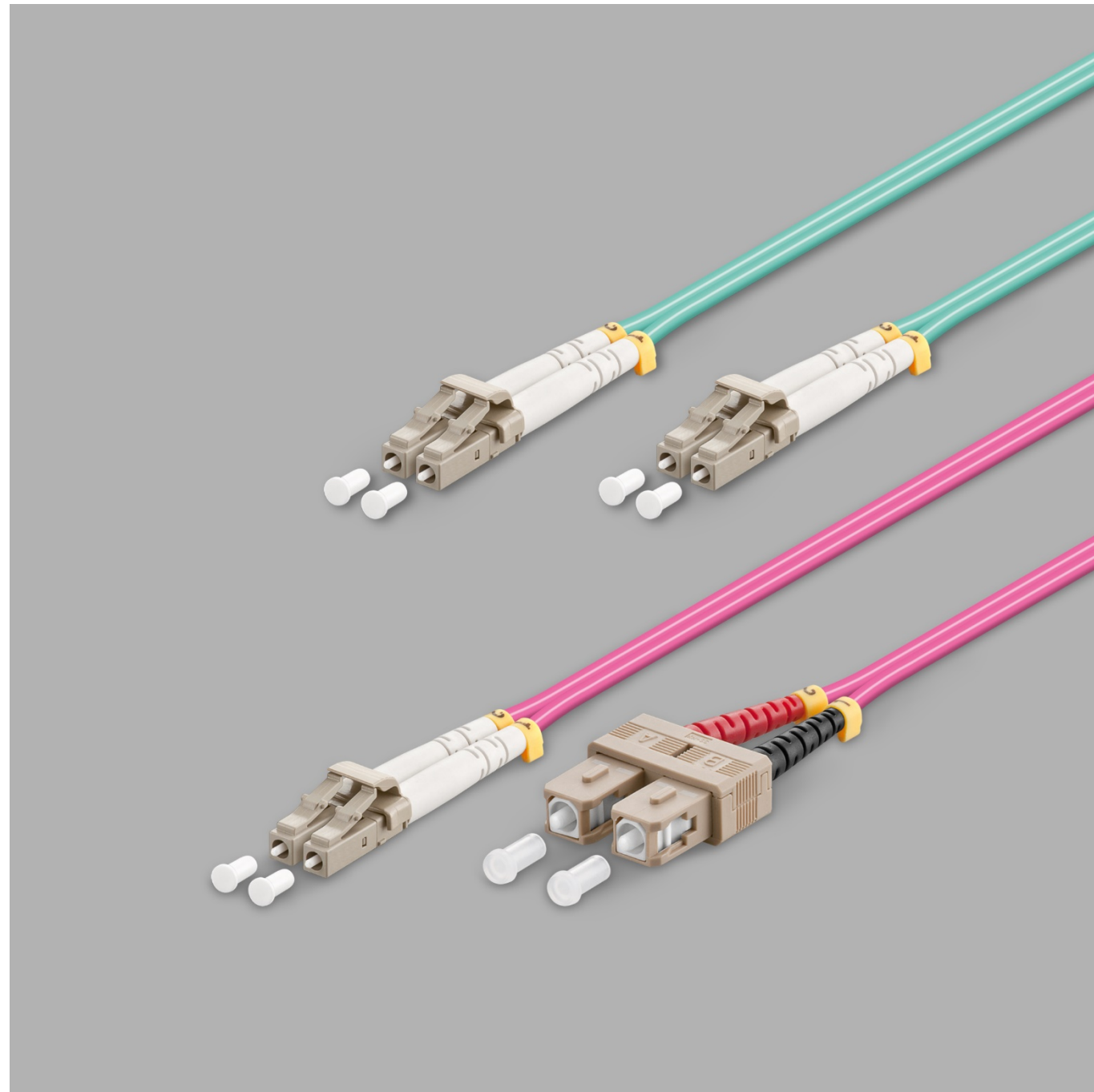
DESIGNED FOR OFFICE, INDUSTRY AND DATA
CENTERS

DUPLEX MULTIMODE OM3 OR OM4 FIBERS

CONNECTOR VARIETY IN VARIOUS
COMBINATIONS

LC/SC TYPES

LENGTHS IN M: 0,5-20



05 PATCH PANELS

FROM MINI TO MAXI PATCH PANELS

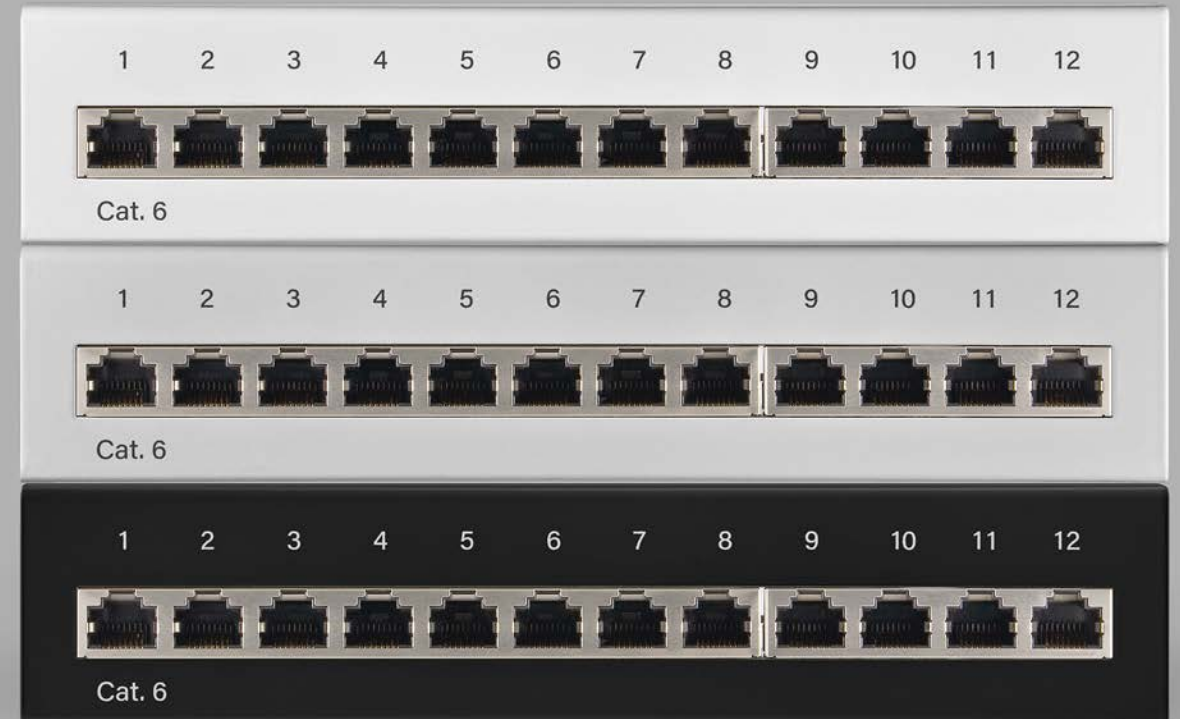
THE CONNECTING ELEMENT FOR CABLES

AS 8/12/24 PORT VERSION

IN 10"/19" OR MINI (FOR DESKTOP MOUNTING)



20 PATCH PANEL TYPES



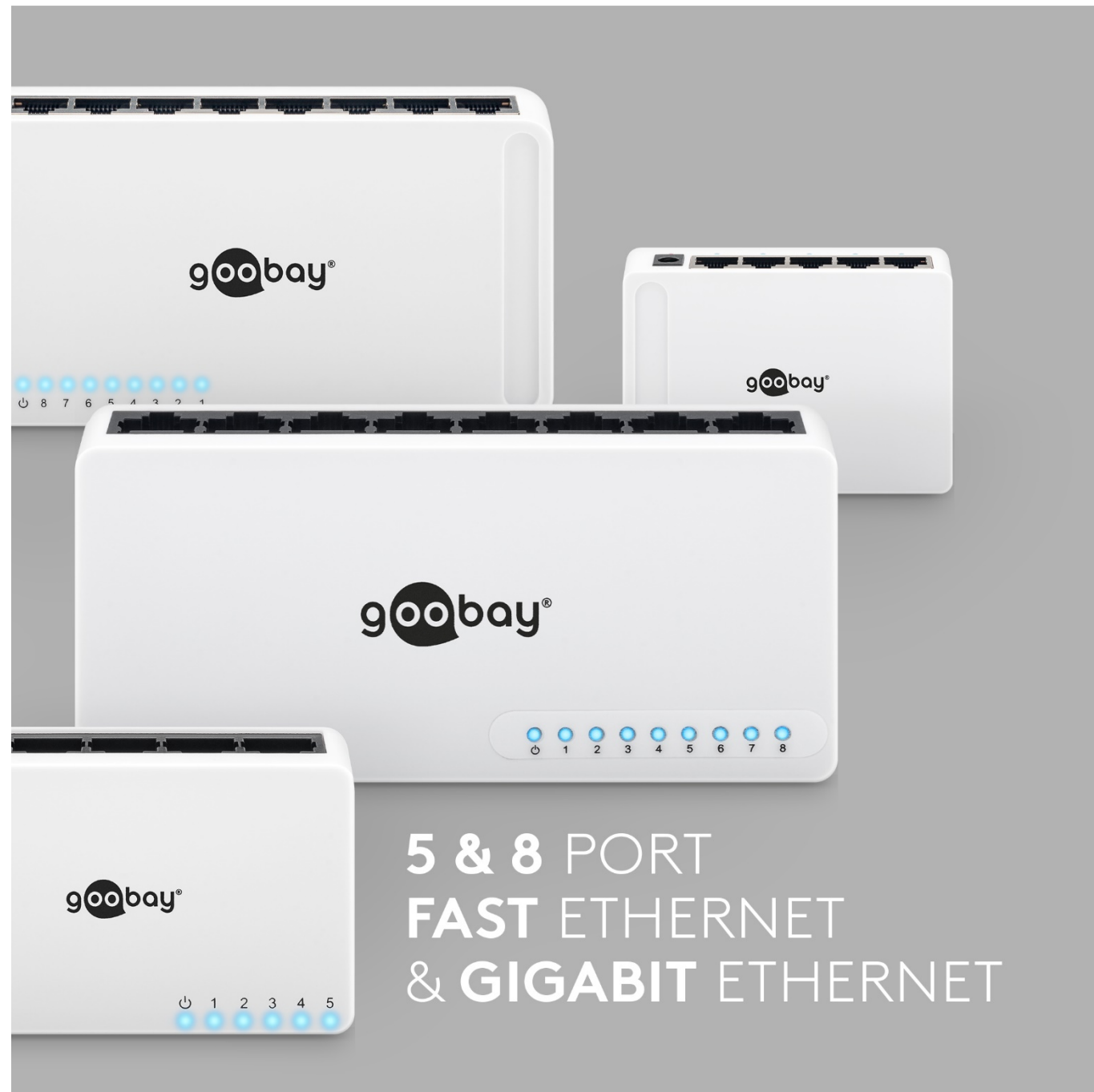
06 NETWORK SWITCHES

ENERGY EFFICIENT NETWORK SWITCHES

THE CONTROL CENTER FOR A WIRED HOME
NETWORK

EXPANDS THE NETWORK WITH ADDITIONAL
CONNECTION OPTIONS OF 10-/100-/
1000-MBIT/S

WITH 5 TO 8 RJ45 PORTS



07 KEYSTONES

INDIVIDUAL & UNIVERSAL KEYSTONES

VERSATILE: PLUG-IN CONNECTIONS CAN BE
COMBINED AS DESIRED - JUST AS REQUIRED

SIMPLE SNAP-IN ASSEMBLY WITHOUT SOLDERING

MODULES FROM NETWORK TO USB TO ANTENNA



08 CABLE MANAGEMENT & PROTECTION

EASY & RELIABLE CABLE MANAGEMENT

FLEXIBLE SLOTS AND CLIPS

ORGANIZE CABLES EASILY

AVOID DAMAGE TO CABLES

WITH 3M ADHESIVE SURFACE FOR LONG,
RELIABLE HOLD

CAN ALSO BE USED IN THE CAR



08 CABLE MANAGEMENT & PROTECTION

REMARKABLY SAFE CABLE PROTECTORS & MARKERS

DUST COVERS

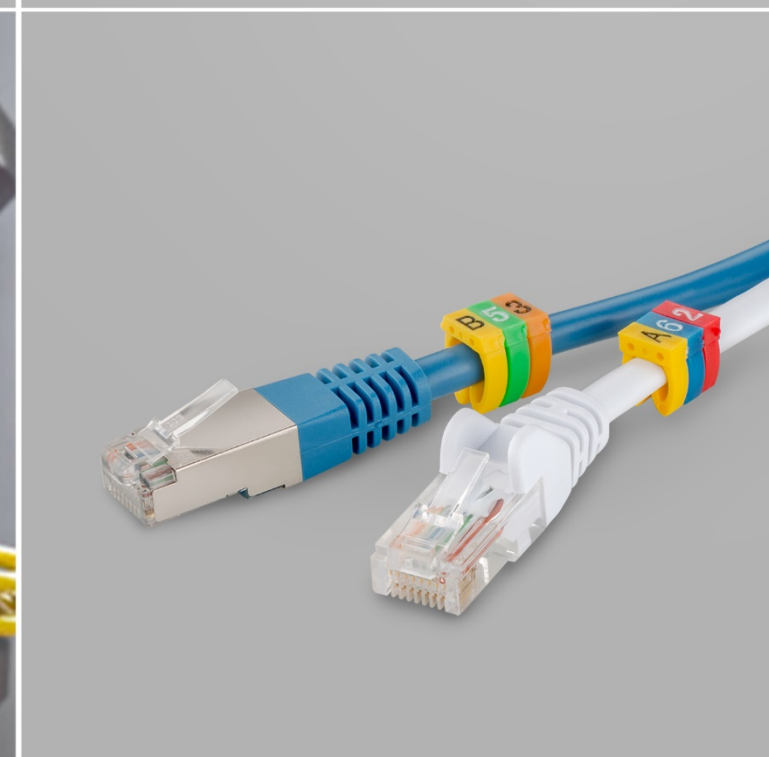
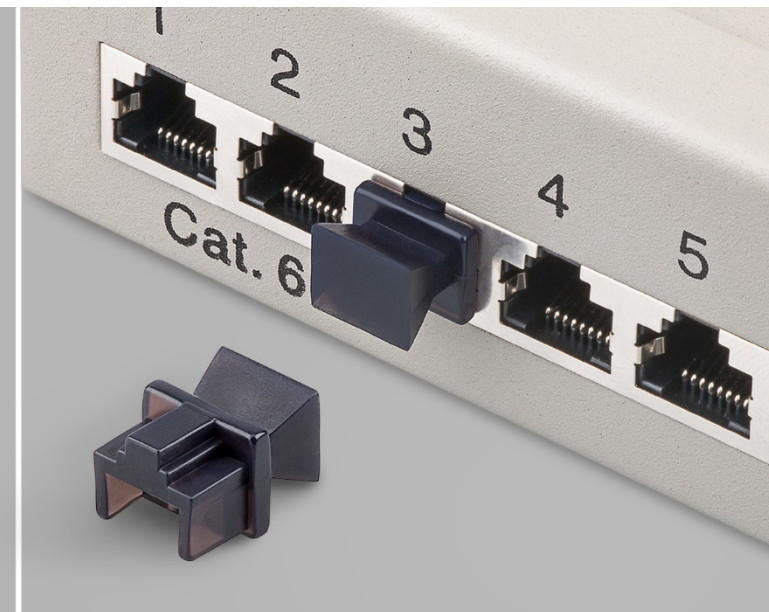
KEEPS RJ45, ISDN, NETWORK OUTLET AND PATCH PANEL CLEAN

LATCH & NOSE PROTECTOR

PREVENTS CABLE SNAGGING AND BREAKAGE OF LATCH LEVER AND LUG

CLIP ON CABLE MARKER

WITH NUMBERS (0 TO 9) OR LETTERS (A, B, C)
FOR CABLE DIAMETERS FROM 2,5-6 MM²



09 INSTALLATION ACCESSORIES

EXTRA CONVENIENT ACCESSORIES FOR THE INSTALLATION

A LARGE SELECTION OF

WALL PLATES

CONNECTORS

HUBS

SOCKETS

TOOLS

MEASUREMENT DEVICES





ALWAYS THERE FOR YOU CONTACT

Wentronic GmbH
Pillmannstraße 12
38112 Braunschweig

Phone: +49 531 21058 – 0
Fax: +49 531 21058 – 22
office@wentronic.com

Product and packaging illustrations similar.
Errors and omissions excepted.

© Wentronic GmbH

